

Il luogo perfetto/

THE PERFECT PLACE

.....
POKER

ALF (+) DA FRE'



ALF (+) DA FRE[®]

Una casa, tante cose

One home, so many things

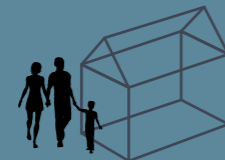
**In ogni casa,
in tutte
le stanze,
c'è un mondo
di oggetti e
passioni da
contenere e
organizzare/**



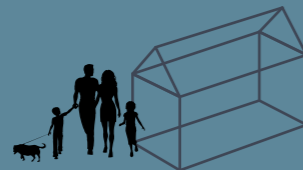
me



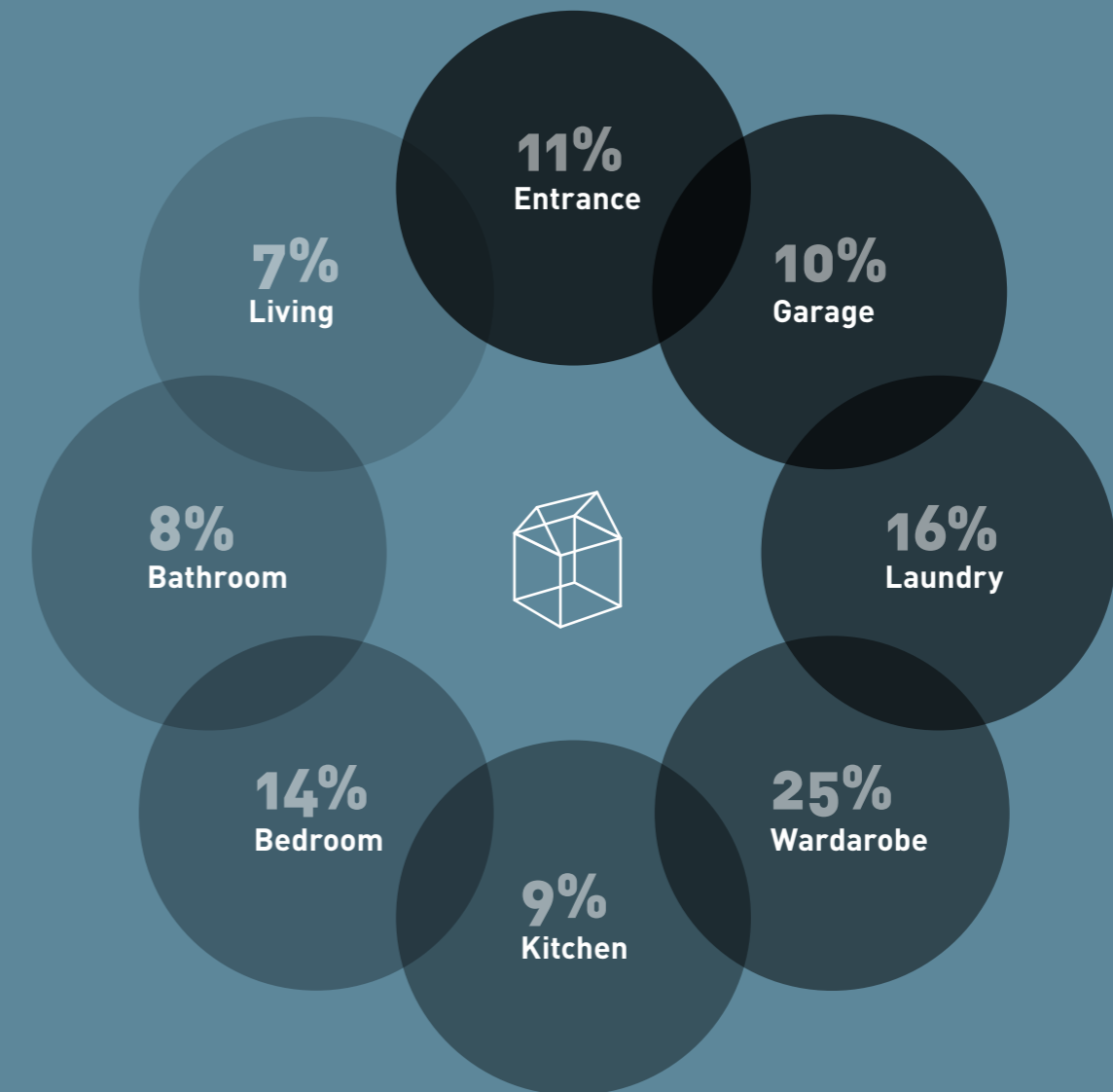
you and me



small family



large family



In every home, in every room, there's a world of belongings and passions to store and organise

En cada hogar, en cada habitación, hay todo un mundo de objetos y pasiones que guardar y organizar

Dans chaque maison, dans toutes les pièces, il y a un monde d'objets et de passions à ranger et organiser

Jedes Zuhause und jedes Zimmer ist ein Universum, in dem unzählige Dingen und Leidenschaften ihren Platz finden wollen

В любом доме, во всех помещениях, существует целый мир предметов и увлечений, которые следует размещать и упорядочивать

FUNZIONI

Functions



ponte

/bridge /puente /pont
/Überbau /мостовая конструкция

trasformabile

/convertible /transformable /transformable
/flexibel /преобразуемая

stagionale

/seasonal /de temporada /saisonnier
/saisonal /временная

schienale attrezzato

/accessorised back panel
/panel de pared equipado /fond équipé
/Schränk wand /оборудованная задняя стенка

aggregabile

/modular /agregable /associable
/anbaubar /сочетаемая

scorrevole

/sliding /puerta corredera /coulissante
/Schiebetür /раздвижной

battente

/swinging /puerta batiente /battante
/Drehtür /распашной

bifacciale

/two-faced /a dos caras /double face
/doppelseitig /двухсторонний

vano a giorno

/open compartment
/compartimento abierto /niche
/Offenfach /открытый отсек



AMBIENTI

Rooms

ingresso

/entrance hall
/entrada /entrée
/Eingang /прихожая

lavanderia

/laundry room
/lavadero buanderie
/Waschküche /прачечная

cameretta

/children's bedroom /dormitorio infantil
/chambre d'enfant /Kinderzimmer /детская

camera

/bedroom
/dormitorio /chambre
/Schlafzimmer /спальня

cabina armadio

/walk-in wardrobe /armario vestidor
/cabine armoire /Schränkkabine /гардеробная

studio

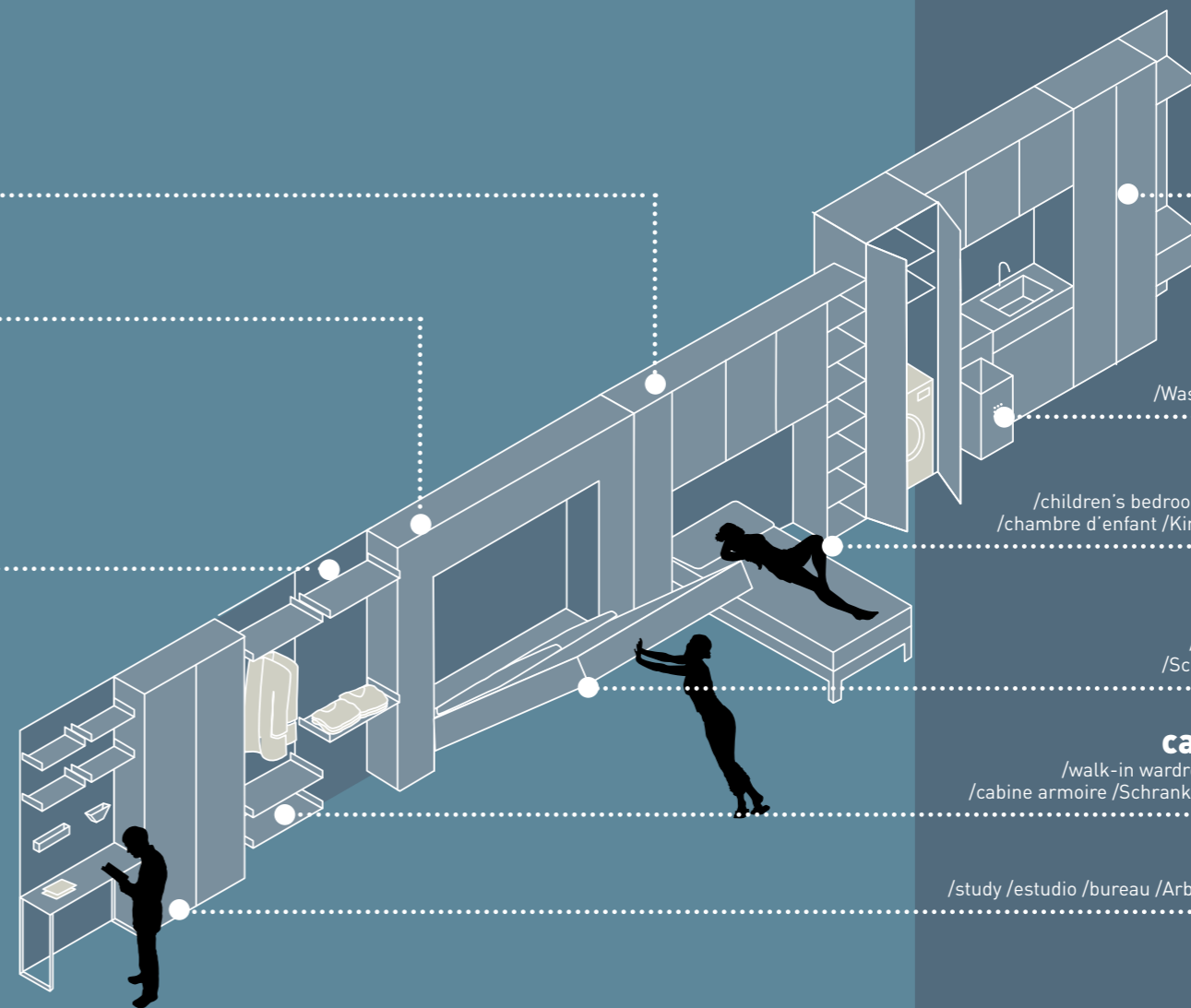
/study /estudio /bureau /Arbeitszimmer /кабинет

corridoio

/corridor /pasillo /couloir /Gang /коридор

living

/living room /salón /living /Wohnzimmer /гостиная



Quattro scenari domestici diversi, quattro esempi delle infinite possibilità di un sistema unico.

POKER



design **Enrico Cesana**

Four different domestic scenarios, four examples of endless possibilities for a unique system.

Cuatro contextos domésticos distintos, cuatro ejemplos de las infinitas posibilidades que ofrece un sistema único.

Quatre décors domestiques différents, quatre exemples des infinies possibilités d'un système unique.

Vier Einrichtungsszenarien und vier Beispiele für die unendlichen Kombinationsmöglichkeiten eines einzigen Systems.

Четыре различных варианта интерьера, четыре примера безграничных возможностей единой системы.



 **APPARTAMENTO**
Milano p. 88



 **SASSI**
Matera p. 76



 **CASA CONTADINA**
Asolo p. 10



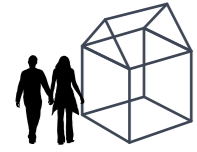
 **CASA MODERNA**
Capo Caccia p. 38

Technical data
p. 97

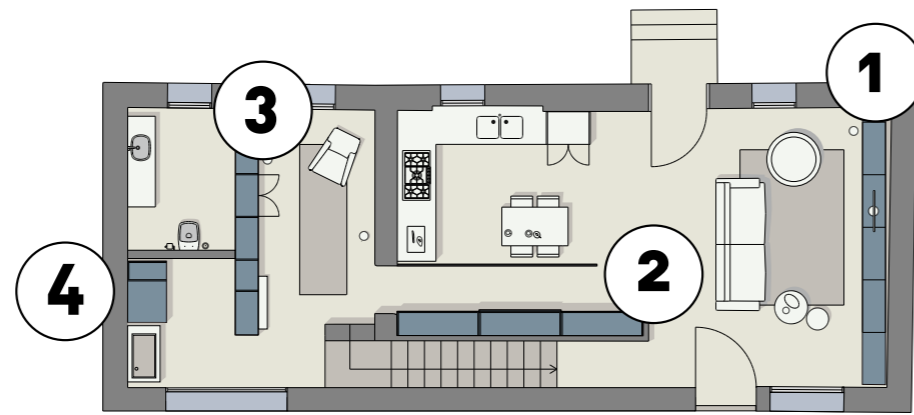
La natura delle cose/

THE NATURE OF THINGS

POKER



you and me



- 1** **SOGGIORNO** Composizione Poker laccato juta opaco, interno trama coloniale. Struttura libreria verniciato bianco, ripiani libreria laccato bianco opaco.
LIVING ROOM Poker composition lacquered in matt juta, colonial pattern interior. Bookcase structure painted bianco, bookcase shelves lacquered in matt bianco.



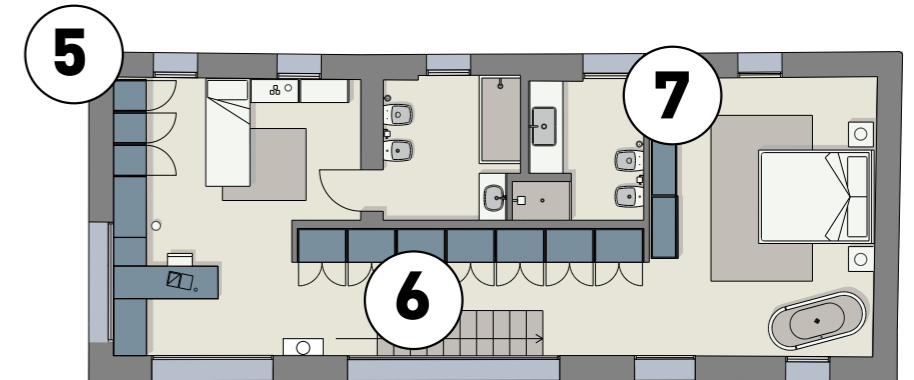
- 2** **INGRESSO CORRIDOIO** Composizione Poker nobilitato rovere Pembroke bianco/laccato bianco opaco. Fianchi laccato bianco opaco, interno nobilitato trama gesso, tubi appendiabiti verniciato bianco.
ENTRANCE HALL CORRIDOR Poker composition in bianco Pembroke oak surfaced/lacquered in matt bianco. Side panels lacquered in matt bianco, chalk pattern surfaced interior, bianco painted clothes-hanger tubes.



- 3** **STUDIO** Composizione Poker laccato oceano opaco e maniglie laccato juta opaco. Attrezzatura (mensole e porta oggetti) verniciato juta opaco.
STUDY Poker composition lacquered in matt oceano and handles lacquered in matt juta. Equipment (shelves and storage compartments) painted in matt juta.



- 4** **LAVANDERIA** Composizione Poker nobilitato bianco opaco (idrorepellente) maniglia verniciato bianco opaco, interno nobilitato trama gesso.
LAUNDRY ROOM Poker composition in matt bianco surfaced (water-repellent), handle painted in matt bianco, chalk pattern surfaced interior.



- 5** **CAMERETTA** Composizione Poker nobilitato rovere Pembroke laccato juta, maniglia in laccato juta opaco interno nobilitato trama gesso. Scrivitoio Titan laccato acquamarina opaco.
CHILDREN'S BEDROOM Poker composition in juta lacquered Pembroke oak surfaced, handle lacquered in matt juta and chalk pattern surfaced interior. Titan desk lacquered in matt acquamarina.



- 6** **CORRIDOIO** Composizione Poker laccato bianco opaco, interno nobilitato trama gesso e maniglia laccato piombo opaco.
CORRIDOR Poker composition lacquered matt bianco, chalk pattern surfaced interior and handle lacquered in matt piombo.



- 7** **CAMERA** Composizione Poker laccato the verde, interno nobilitato trama gesso, tubi, divisori, porta camicie e maniglie verniciati bianco opaco.
BEDROOM Poker composition lacquered in the verde, chalk pattern surfaced interior, tubes, partitions, shirt racks and handles painted in matt bianco.



**Un soggiorno
affacciato
sulla natura
e pieno
di contenuti
intelligenti/**



A living room overlooking nature and filled with clever contents.

Un salón que se abre a la naturaleza, repleto de contenidos inteligentes.

Un séjour tourné vers la nature et plein de contenus intelligents.

Ein Wohnbereich mit Blick auf die Natur und voller intelligenter Lösungen für mehr Stauraum.

Гостиная, обращенная к природе, наполненная интеллектуальным содержанием.



Poker L489,2 P43,8 H251,9 ASOLO_ground floor
Wok tavolino /occasional table Ø27,5 H50
Wokbox tavolino /occasional tableØ35 H43



It's so good to come home and feel fully at ease.

Es bonito sentirse bienvenido al volver a casa.

C'est beau de rentrer chez soi et de se sentir pleinement accueilli.

Es ist schön, nach Hause zu kommen und sich willkommen zu fühlen.

Как хорошо вернуться домой и почувствовать, что тебя здесь ждут.



È bello tornare a casa e sentirsi pienamente accolti/



Poker L440,5 P50,6 H255,1 **ASOLO**_ground floor
Board tavolo /table L240 P100 H75
Karol sedia /chairL50 P62 H80





Poker L305,2 P43,8 H255,1 **ASOLO**_first floor
Viky sedia /chair L59 P52 H76,5
Denny pouf /footstool Ø55 H42

A solution devised to combine a desk and a wardrobe, even in confined spaces.

Una solución estudiada para combinar el escritorio con el armario, incluso en poco espacio.

Une solution conçue pour associer bureau et armoire, même dans un espace réduit.

Eine perfekte Lösung, um Schreibtisch und Schrank auch auf engem Raum zu kombinieren.

Решение, разработанное для сочетания письменного стола и шкафа, даже в небольшом пространстве.

Una soluzione studiata per abbinare scrivania e armadio, anche in un piccolo spazio/



Prodotti_Products

ASSE DA STIRO/PIANO ESTRAIBILE

Extractable shelf/ironing board
Tabla de planchar/superficie extraíble
Planche à repasser/plan extractible
Bügelbrett/ausziehbare platte
гладильная доска/выдвижная поверхность

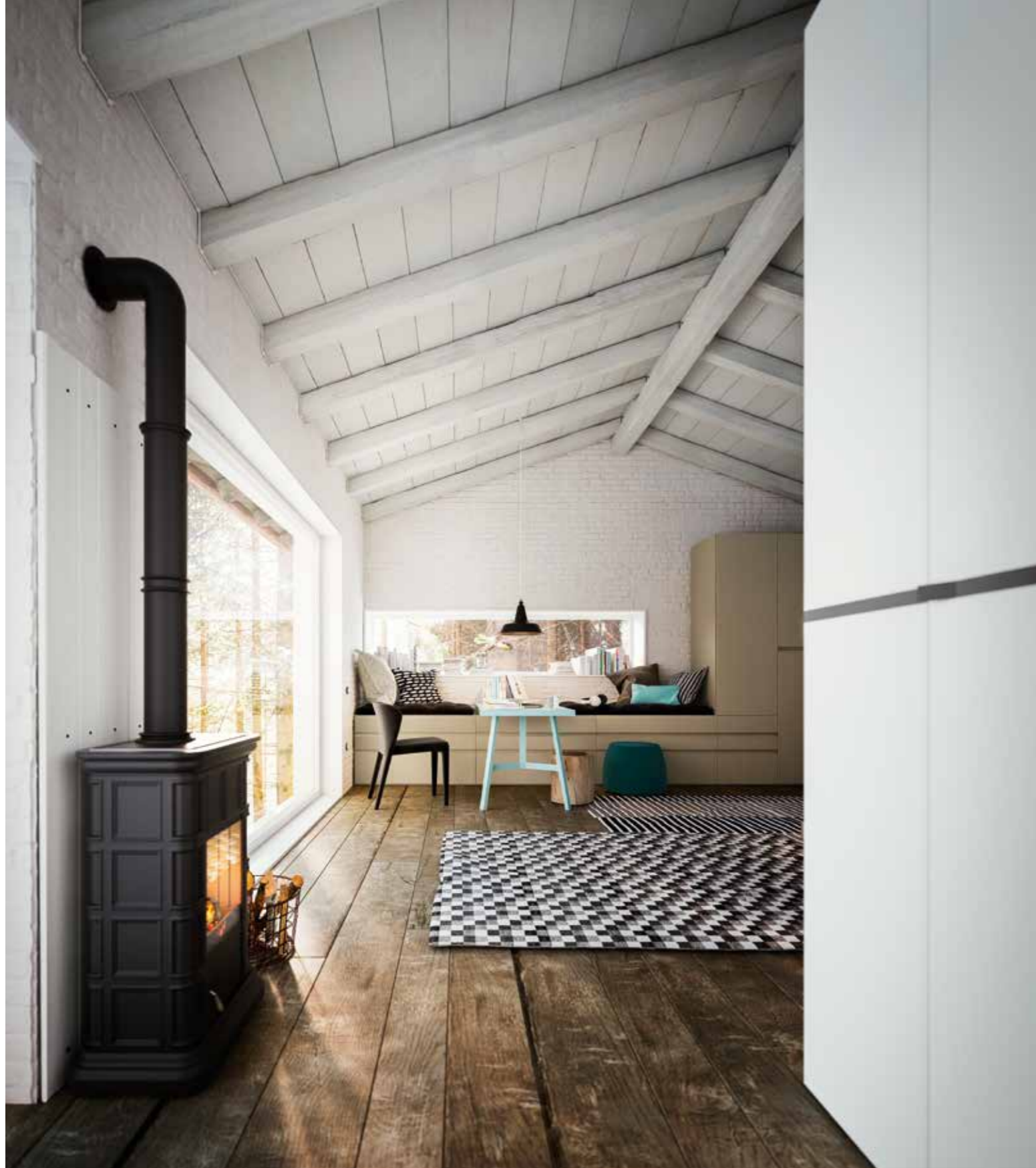
PORTA LAVATRICE

Washing machine cabinet
Mueble para lavadora
Meuble pour lave-linge
Waschmaschinenschrank
Модуль для стиральной машины

PORTA LAVATRICE ASCIUGATRICE

Washer-dryer cabinet
Mueble para lavadora secadora
Meuble pour lave-linge et sèche-linge
Waschmaschinen-/trocknerschrank
Модуль для стиральной и сушильной машины

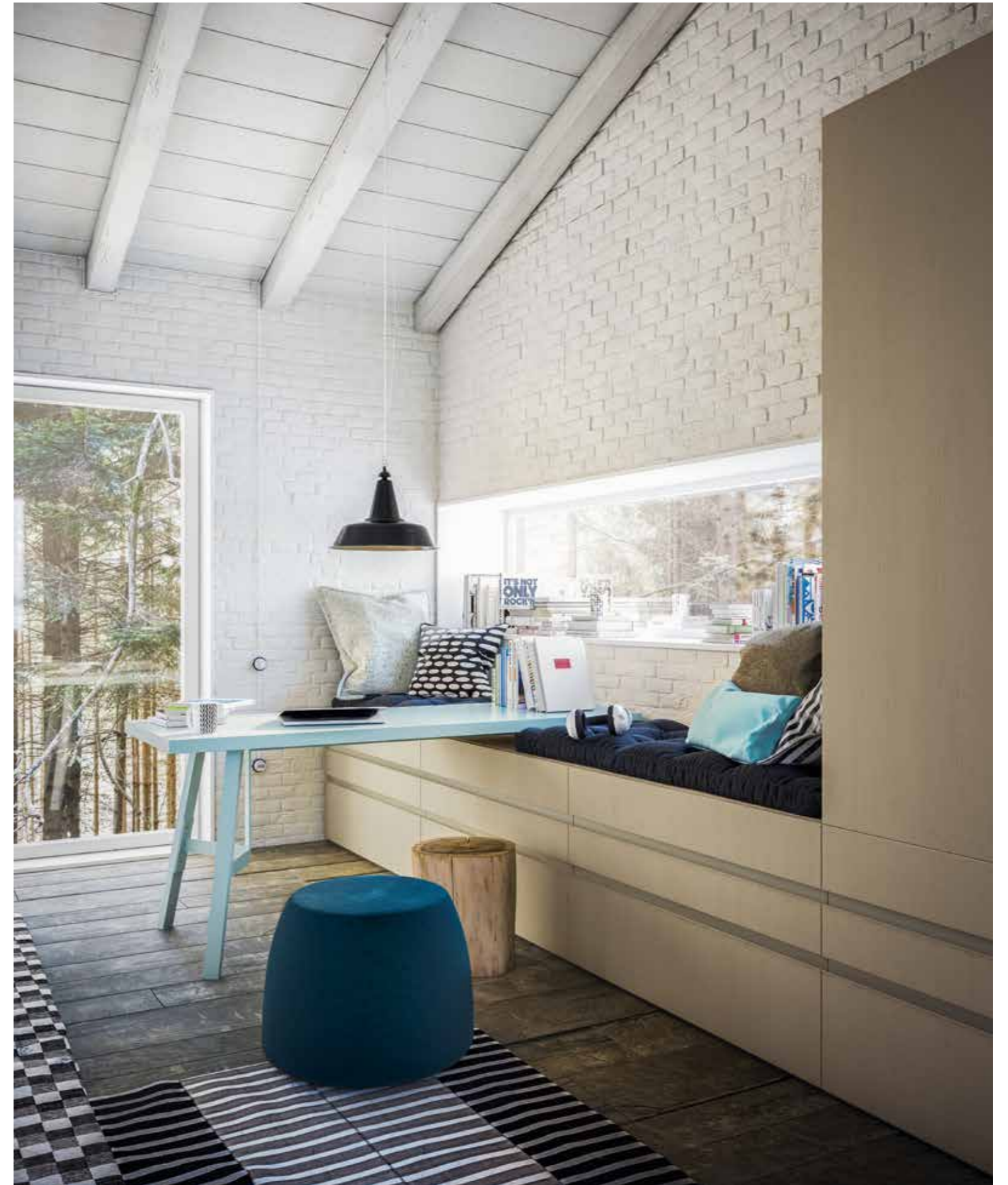




Poker L509,9 P61,2 H235,9
Ceppo tavolino /occasional table Ø30 H37
Denny pouf /footstool Ø42 H42

Titan scrittoio /desk L180 P70 H76
Karol sedia /chair L50 P80 H62

ASOLO_first floor



**Uno spazio
nel quale
creare
molteplici
attività
e situazioni,
in perfetta
armonia/**

A space to create multiple activities and situations, in perfect harmony

Un espacio en el que crear multitud de actividades y situaciones, en perfecta armonía

Un espace dans lequel créer de multiples activités et situations, en parfaite harmonie

Perfekte Harmonie: Ein Raum für viele Aktivitäten und Situationen

Пространство для многочисленных видов деятельности и ситуаций, в полной гармонии

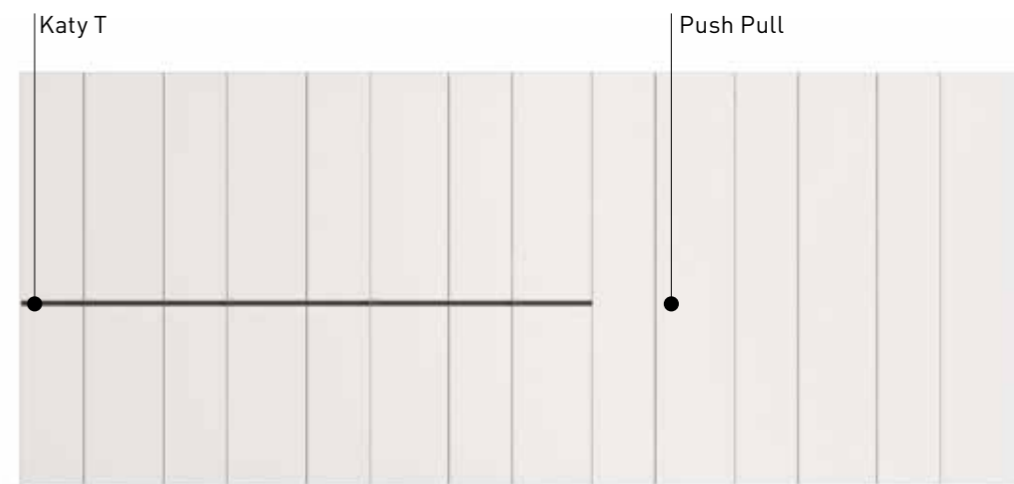


/Maniglie

Handles:
Tiradores
Poignées
Griffe
Ручки

/Confronta le finiture

Compare finishes
Consulta la gama de acabados
Comparez les finitions
Vergleichen Sie die Ausführungen
Сравните варианты отделки



Laccato bianco opaco /Matt bianco lacquered



Laccato tortora opaco /Matt tortora lacquered



Ecowood Olmo scuro /Dark elm Ecowood

Poker L614 P61,2 H255,1 | ASOLO_first floor
Ceppo tavolino /occasional table..... Ø30 H47



**Armadi
generosi che
diventano
elementi
d'architettura
oltre che
d'arredo/**

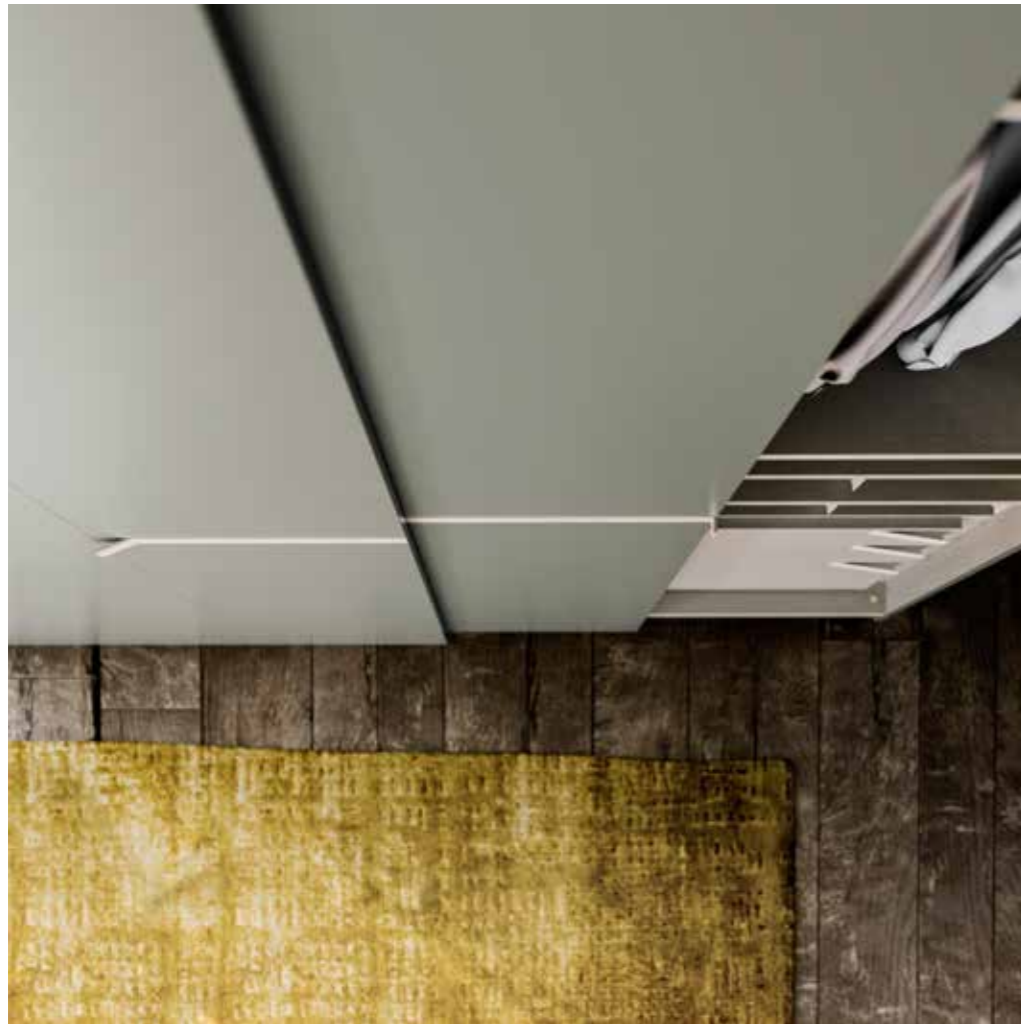
Generously proportioned wardrobes that become architectural features as well as furniture

Armarios espaciosos que se convierten en elementos de arquitectura, no solo de mobiliario

Des armoires généreuses qui deviennent des éléments d'architecture plus que des éléments de décoration

Geräumige Schränke, die bei der Einrichtung architektonische Akzente setzen

Великолепные шкафы, которые становятся не только элементом интерьера, но и архитектуры



Large sliding doors reveal the wardrobe contents in a single move.

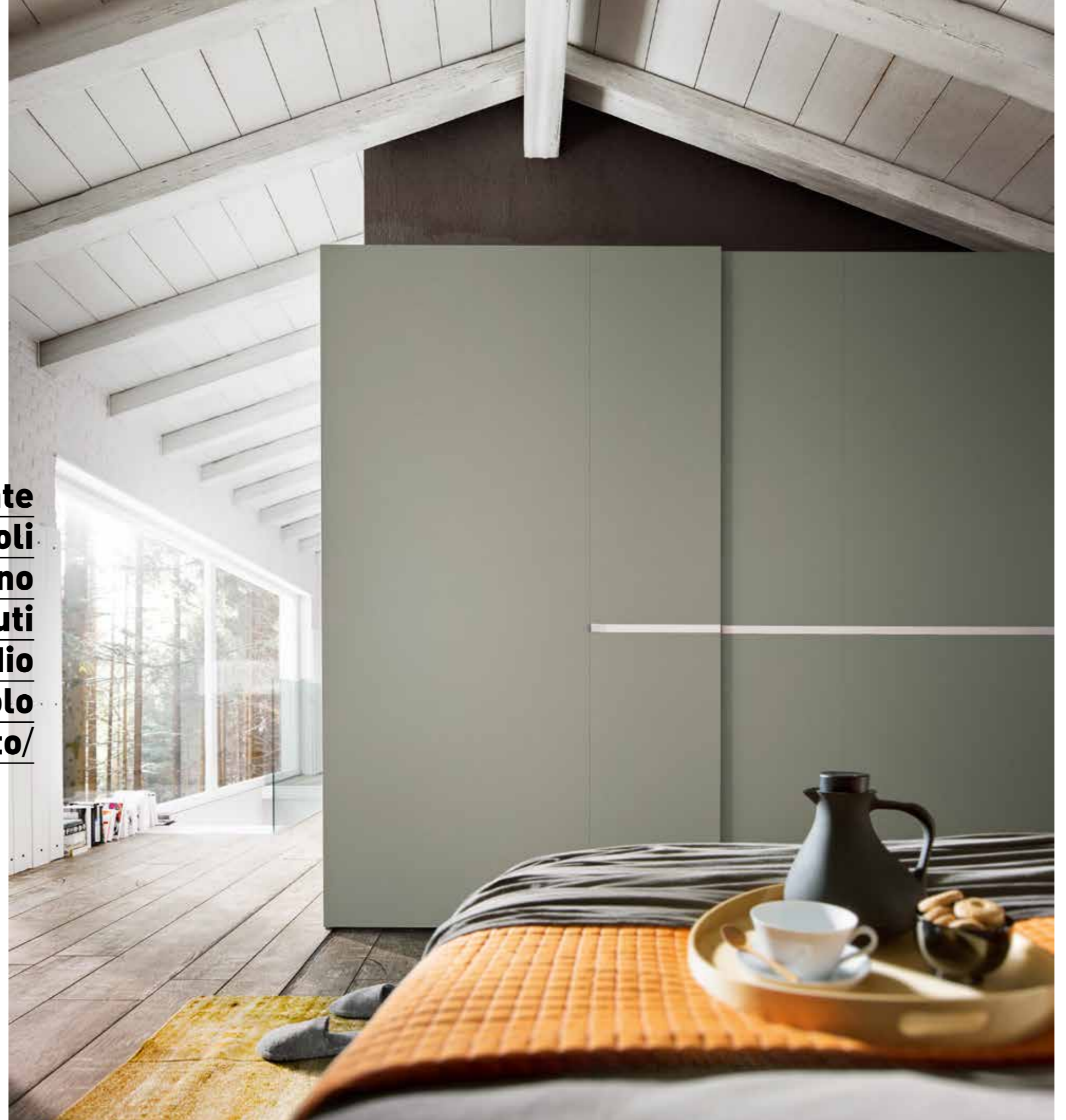
Amplias puertas correderas que dejan al descubierto el contenido del armario con un simple gesto.

Les amples portes coulissantes dévoilent les contenus de l'armoire en un seul geste.

Mit nur einer Geste verschwindet der Schrankinhalt hinter großzügigen Schiebetüren.

Обширные раздвижные створки одним жестом раскрывают содержимое шкафа.

Ampie ante scorrevoli svelano i contenuti dell'armadio con un solo gesto/



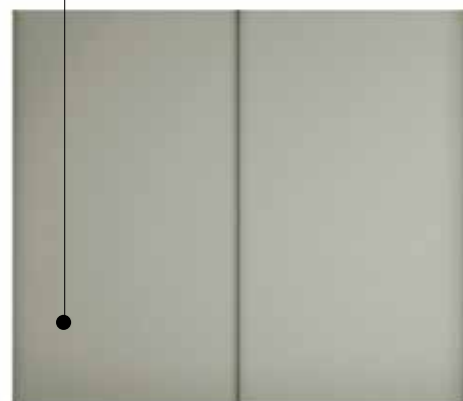
Clara



/Confronta le ante

Compare doors
Consulta la gama de puertas
Comparez les portes
Vergleichen Sie die Türen
Сравните створки

Contour



/Confronta le finiture

Compare finishes
Consulta la gama de acabados
Comparez les finitions
Vergleichen Sie die Ausführungen
Сравните варианты отделки



Poker L294,4 P65 H255,1 ASOLO_first floor
Ceppo seduta /Ceppo seat Ø30 H47

ASOLO

POKER SYSTEM

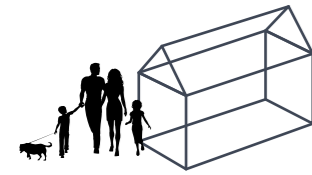
Alf + daFrè

Il lusso della semplicità/

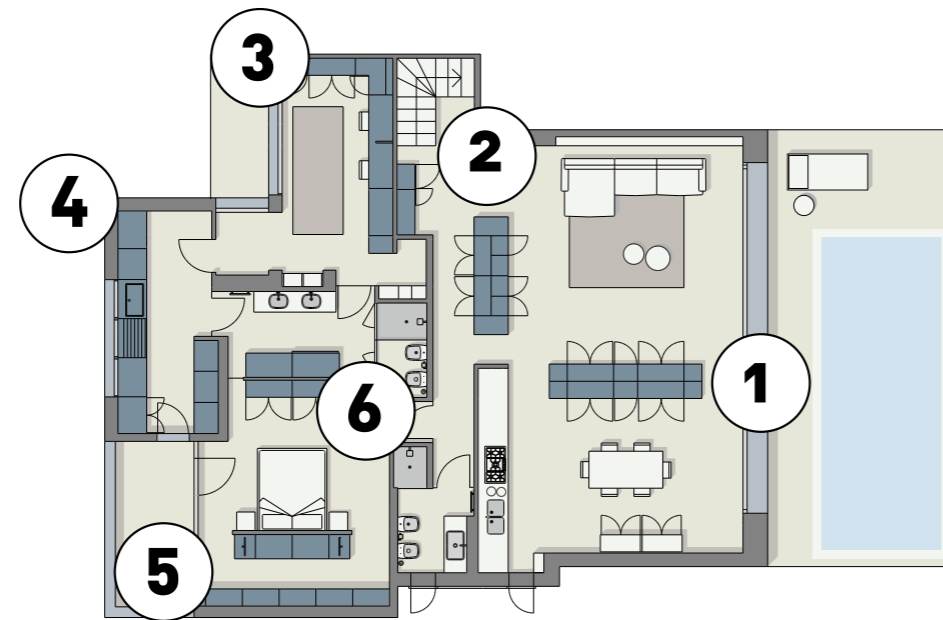
THE LUXURY OF SIMPLICITY

POKER





large family



1 **INGRESSO/SOGGIORNO** Composizione Poker bifacciale laccato platino opaco, vano a giorno Ecowood Olmo scuro. Interno nobilitato trama coloniale.
ENTRANCE HALL/LIVING ROOM Two-faced Poker composition lacquered in matt platino, open compartment in dark elm Ecowood. Colonial pattern surfaced interior.



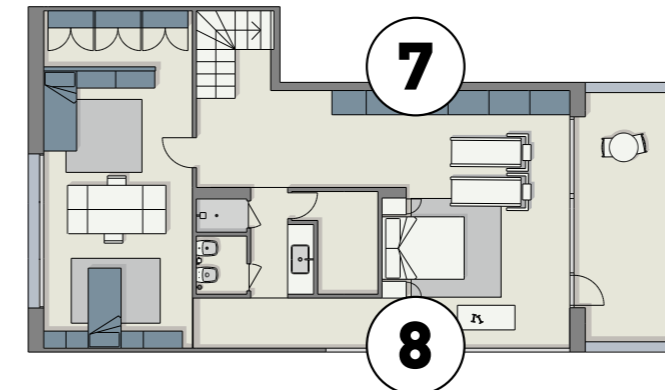
2 **SOGGIORNO/CUCINA** Composizione Poker bifacciale Ecowood Olmo scuro, interno nobilitato trama coloniale. Schiene laccato platino opaco, librerie struttura e ripiani laccato platino opaco.
LIVING ROOM/KITCHEN Two-faced Poker composition in dark elm Ecowood, colonial pattern surfaced interior. Back panels lacquered in matt platino, bookcase structure and shelves lacquered in matt platino.



3 **STUDIO** Composizione Poker Rasato tortora ed Ecowood Olmo biscotto. Interno nobilitato trama coloniale, attrezzatura (mensole e porta oggetti) verniciato titanio.
STUDY Poker composition in tortora Skimmed and biscotto elm Ecowood. Colonial pattern surfaced interior, equipment (shelves and storage compartments) painted in titanio.



4 **LAVANDERIA** Composizione Poker nobilitato bianco opaco (idrorepellente). Interno nobilitato trama gesso, maniglie, frontale cestone biancheria, attrezzature verniciato bianco.
LAUNDRY ROOM Poker composition in matt bianco surfaced (water-repellent). Chalk pattern surfaced interior, handles, laundry basket front and equipment painted in bianco.



5 **CABINA ARMADIO** Cabina Ecowood Olmo scuro, attrezzatura verniciato titanio. Composizione Poker laccato oceano opaco e attrezzatura verniciato titanio. Interno nobilitato trama coloniale.
WALK-IN WARDROBE Walk-in wardrobe in dark elm Ecowood, equipment painted in titanio. Poker composition lacquered in matt oceano and equipment painted in titanio. Colonial pattern surfaced interior.



6 **BAGNO** Composizione Poker con ante vetro acidato piombo con serigrafia, maniglie laccate piombo opaco. Fianchi laccato piombo opaco, interno nobilitato trama coloniale. Accessori verniciato titanio.
BATHROOM Poker composition with piombo etched glass doors with silk-screen printing, handles lacquered in matt piombo. Side panels lacquered in matt piombo, colonial pattern surfaced interior. Accessories painted in titanio.



7 **SOTTOTETTO** Composizione Poker laccato bianco opaco, maniglie verniciato bianco. Interno nobilitato trama gesso.
ATTIC Poker composition lacquered in matt bianco, handles painted bianco. Chalk pattern surfaced interior.



8 **STANZA OSPITI** Composizione Poker laccato bianco opaco. Interno nobilitato trama gesso.
GUEST ROOM Poker composition lacquered in matt bianco. Chalk pattern surfaced interior.



9 **GARAGE** Composizione Poker nobilitato platino opaco (idrorepellente), maniglie verniciato titanio. Interno nobilitato trama coloniale, attrezzature verniciato titanio.
GARAGE Poker composition in matt platino surfaced (water-repellent), handles painted in titanio. Colonial pattern surfaced interior, equipment painted in titanio.



Poker	L278,3 P87,6 H229,5	SARDEGNA_ground floor
York tavolo /table	L210 P105 H73	
Karol sedia /chair	L50 P80 H62	



**Aggiungere
nuove
dimensioni
agli spazi,
con una
composizione
fruibile a 360°/**



Adding new dimensions to spaces, with an all-round composition for full-time use.

Añadir nuevas dimensiones a los espacios, con una composición aprovechable a 360°.

Ajouter de nouvelles dimensions aux espaces, avec une composition utilisable 360j.

Neue Dimensionen im Raum entdecken, mit einer rundum nutzbaren Schrankwand.

Добавьте новые измерения пространствам, с композицией, используемой на 360j.



Poker..... L365,5 P87,6 H229,5 **SARDEGNA**_ground floor
York tavolo /table L210 P105 H73
Karol sedia /chair L50 P62 H80



**Una soluzione
che unisce
tecnologia
e natura,
con una
venatura di
prestigio/**

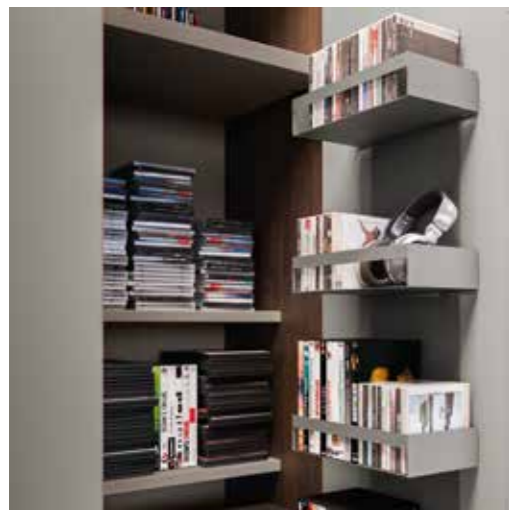
A solution that teams
technology with nature, with
a very fine grain.

Una solución que une
tecnología y naturaleza, con
una veta de prestigio.

Une solution qui unit
technologie et nature, avec
une veinure de prestige.

Eine Lösung, die mit einer
ästhetischen Maserung
Technologie und Natur
vereint.

Решение, объединяющее
технологию и природу, с
изумительной текстурой.



Poker L278,3 P87,6 H229,5
Air tavolino /occasional table L127 P127 H35

SARDEGNA_ground floor





**Un ingresso
impeccabile
e ampi vani
libreria,
nella stessa
composizione/**



Poker L278,3 P87,6 H229,5 | **SARDEGNA**_ground floor
Air tavolino /occasional table L127 P127 H35

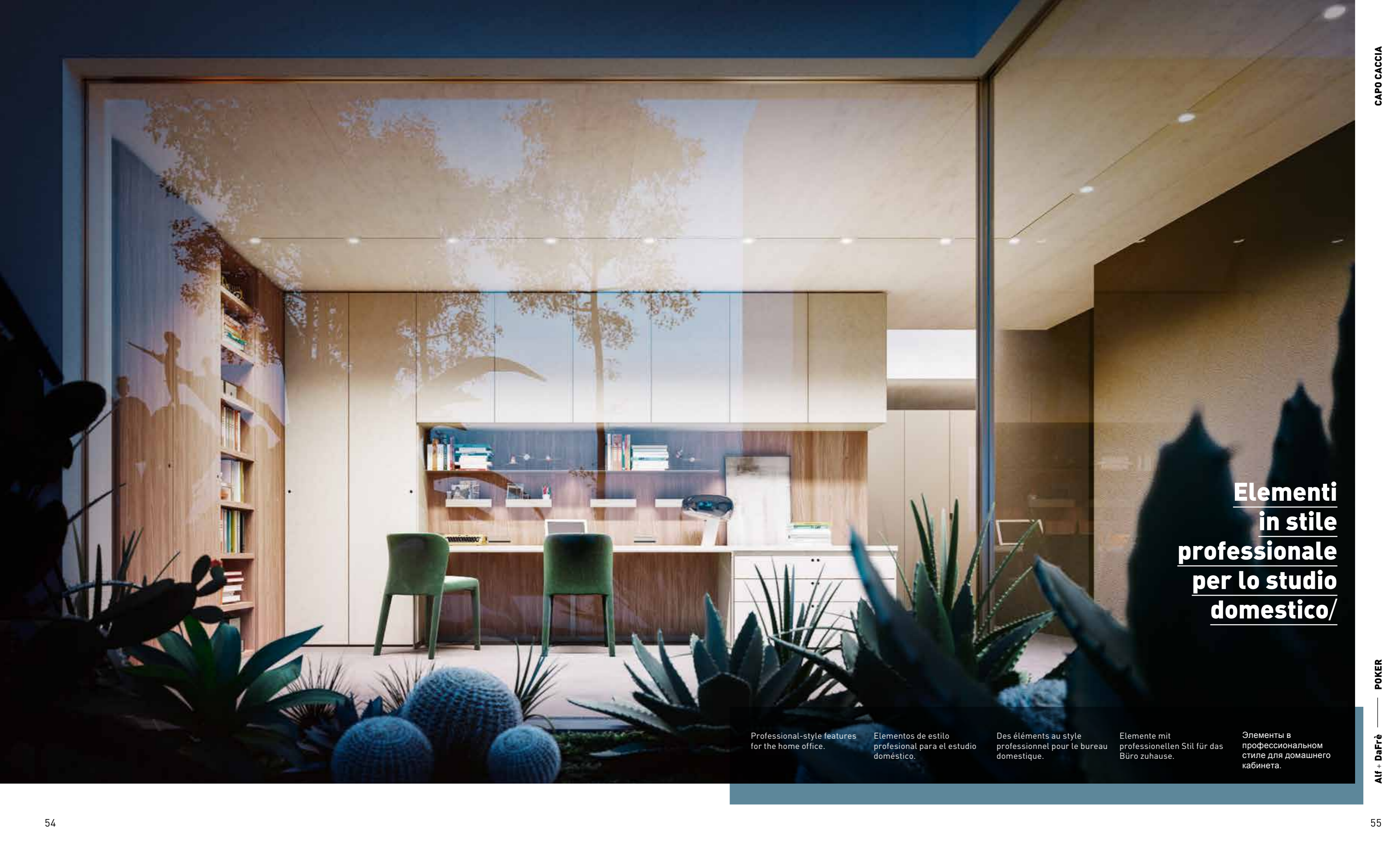
An impeccable entrance hall and capacious bookcase compartments in the same composition.

Una entrada impecable y amplios módulos de librería, en una misma composición.

Une entrée impeccable et d'amples niches bibliothèque, sur la même composition.

Ein makelloser Eingang und viel Platz für Bücher dank einer einzigen Schrankwand.

Великолепная прихожая и обширный книжный шкаф в одной композиции.



**Elementi
in stile
professionale
per lo studio
domestico/**

Professional-style features
for the home office.

Elementos de estilo
profesional para el estudio
doméstico.

Des éléments au style
professionnel pour le bureau
domestique.

Elemente mit
professionellen Stil für das
Büro zuhause.

Элементы в
профессиональном
стиле для домашнего
кабинета.



Poker L253 P43,8 H255,1 SARDEGNA_ground floor
 Poker L478,6 P43,8 H255,1
 Karol sedia /chair L50 P62 H80



**Segnali
di un
autentico
benessere
interiore/**



Poker L227,8 P68 H235,9 | SARDEGNA_ground floor

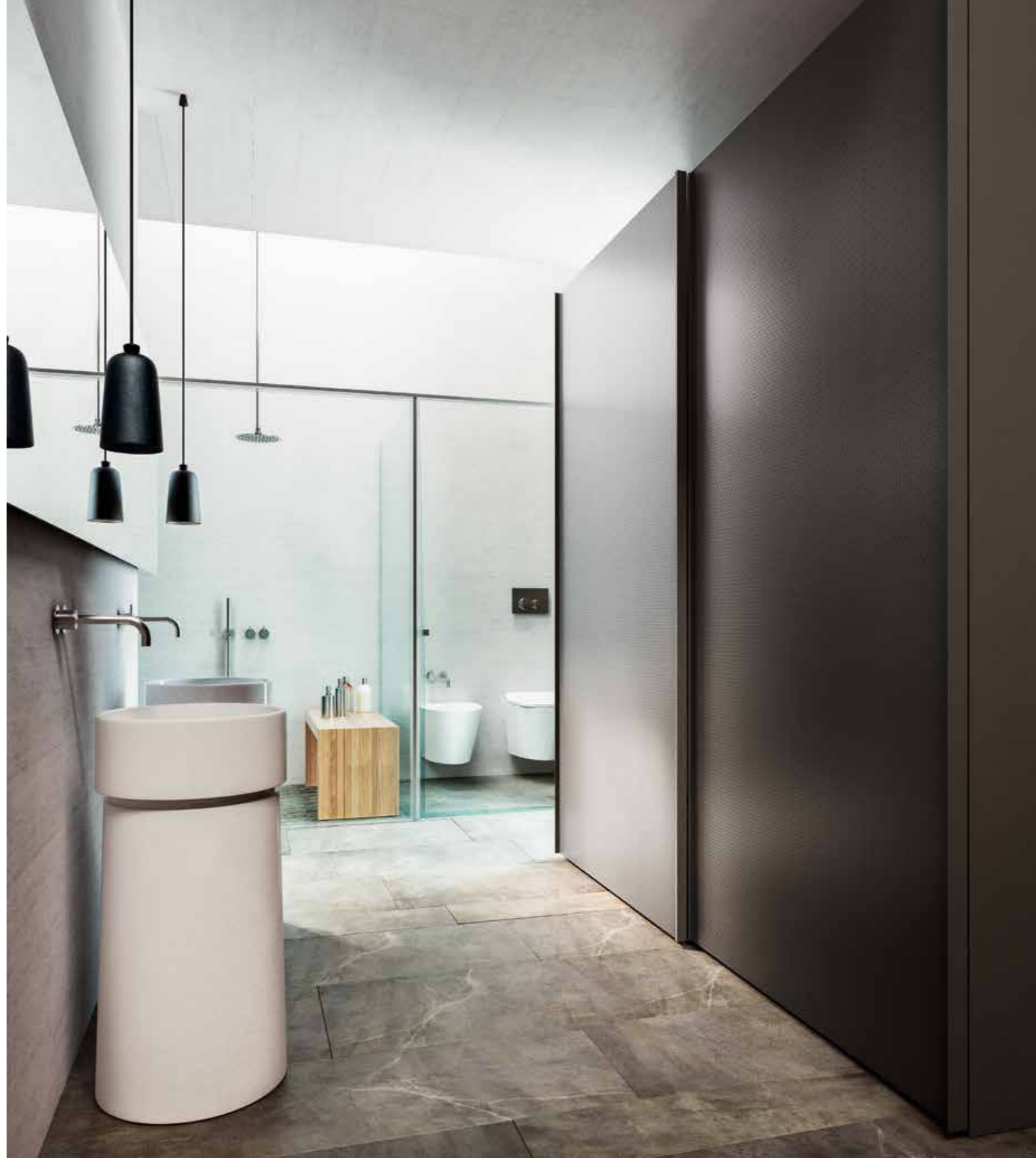
Signs of an authentic internal well-being.

Reflejo de un auténtico bienestar interior.

Signaux d'un bien-être intérieur authentique.

Zeichen für echtes inneres Wohlbefinden.

Черты аутентичного внутреннего благосостояния.





**Una
raffinata
boutique
in riva
al mare/**

Poker cabina /walk-in wardrobe L448 P41 H255,1 **SARDEGNA**_ground floor
Poker..... L257 P65,6 H255,1
Wok Box tavolino / occasional table Ø35 H43

A sophisticated seaside boutique.

Una elegante boutique a la orilla del mar.

Une boutique raffinée en bord de mer.

Eine raffinierte Boutique am Meer.

Изысканный бутик на морском побережье.

**Qualità
sartoriale
in ogni
dettaglio/**



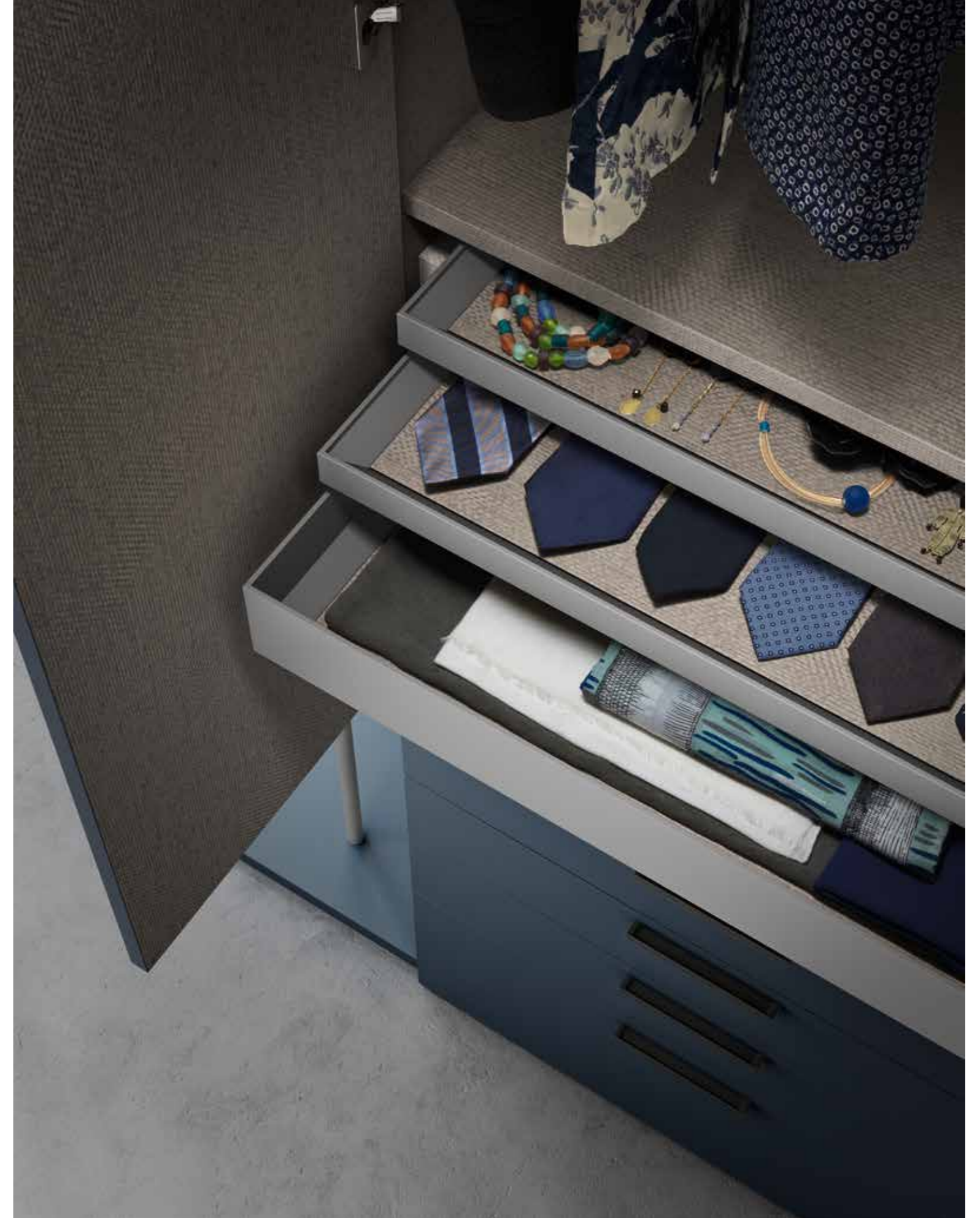
Tailored quality in every detail.

Calidad de confección en cada detalle.

Une qualité de couturier dans chaque détail.

Maßgeschneiderte Qualität in jedem Detail.

Мастерское качество во всех деталях.



**Uno spazio
ideale
per gli
hobby
e per
gli ospiti/**



Poker L287,7 P61,2 H229,5 **SARDEGNA**_ground floor
Up libreria /bookcase L79,8 P33,2 H99,8



The ideal place for hobbies and guests.

Un espacio ideal para los hobbies y los invitados.

Un espace parfait pour les loisirs et pour les invités.

Ein idealer Raum für Hobbys und Gäste.

Идеальное пространство для увлечений и гостей.





**Realizzazioni
su misura
per ambienti
unici/**

Poker L526,6 P61,2 H274,3 | SARDEGNA_ground floor

Bespoke solutions for
unique settings.

Proyectos a medida para
espacios únicos.

Des réalisations sur
mesure pour des espaces
ambiants uniques.

Maßgeschneiderte
Lösungen für einzigartige
Räume.

Композиции по
индивидуальному заказу
для создания уникального
интерьера.





**Una
perfetta
organizzazione
di tutte
le attività
domestiche/**

Poker L204,7 P61,2 H255,1 SARDEGNA_ground floor

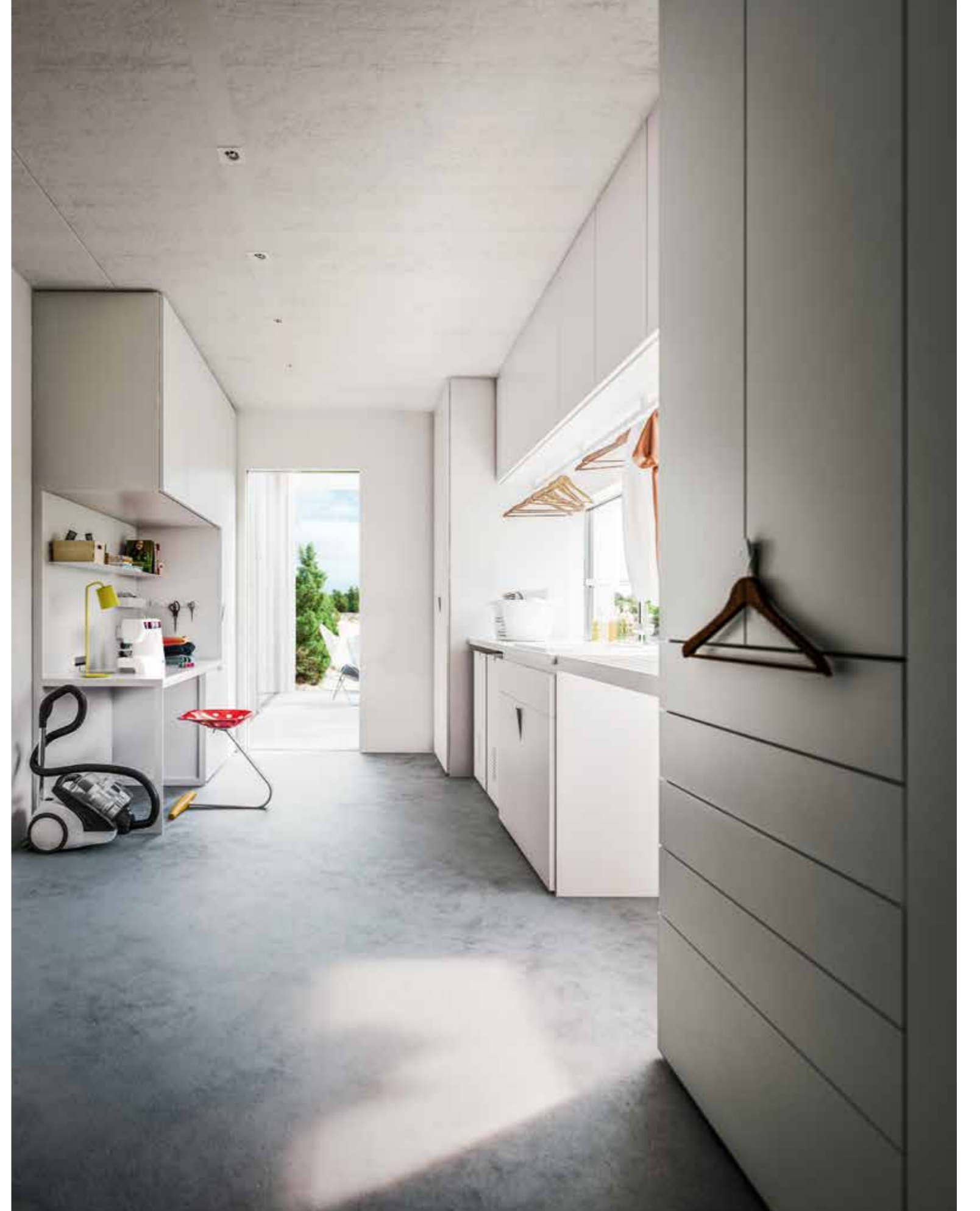
Perfectly neat and tidy organisation for all domestic chores.

Una perfecta organización de todas las actividades domésticas.

Une parfaite organisation de toutes les activités domestiques.

Alle Aktivitäten zuhause perfekt organisiert.

Превосходная организация всех домашних видов деятельности.





Poker L531 P75,2 H255,1 | SARDEGNA_ground floor



**Funzionalità
con stile
anche negli
ambienti
più tecnici/**



Poker L480 P61,2 H235,9 | SARDEGNA_ - 1 level

Stylish functionality, even in more technical amenities.

Funcionalidad con estilo incluso en los espacios más técnicos.

Fonctionnalité avec style même pour les espaces ambients les plus techniques.

Funktionalität mit Stil, auch in den Nebenräumen.

Функциональность со стилем даже в самых технических помещениях.



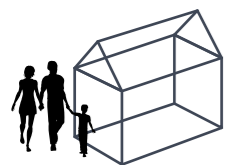
Memorie del presente/

MEMORIES OF THE PRESENT

.....

POKER





small family



- 1** **CAMERA** Composizione Poker nobilitato rovere tortora, maniglie laccato tortora opaco. Interno nobilitato trama gesso. Struttura libreria verniciato bianco e ripiani nobilitato rovere tortora, accessori verniciato bianco.
BEDROOM Poker composition in tortora oak surfaced, handles lacquered in matt tortora. Chalk pattern surfaced interior. Bookcase structure painted in bianco and shelves in tortora oak surfaced, accessories painted in bianco.



- 2** **CAMERA/BAGNO** Composizione Poker bifacciale laccato pacifico opaco, maniglie laccato pacifico opaco. Interno nobilitato trama coloniale. Ante specchio, fianchi laccato pacifico, maniglie laccato pacifico opaco. Interno nobilitato trama coloniale e accessori interni verniciato titanio.
BEDROOM/BATHROOM Two-faced Poker composition lacquered in matt pacifico, handles lacquered in matt pacifico. Colonial pattern surfaced interior. Mirrored doors, side panels lacquered in pacifico, handles lacquered in matt pacifico. Colonial pattern surfaced interior and internal equipment painted in titanio.



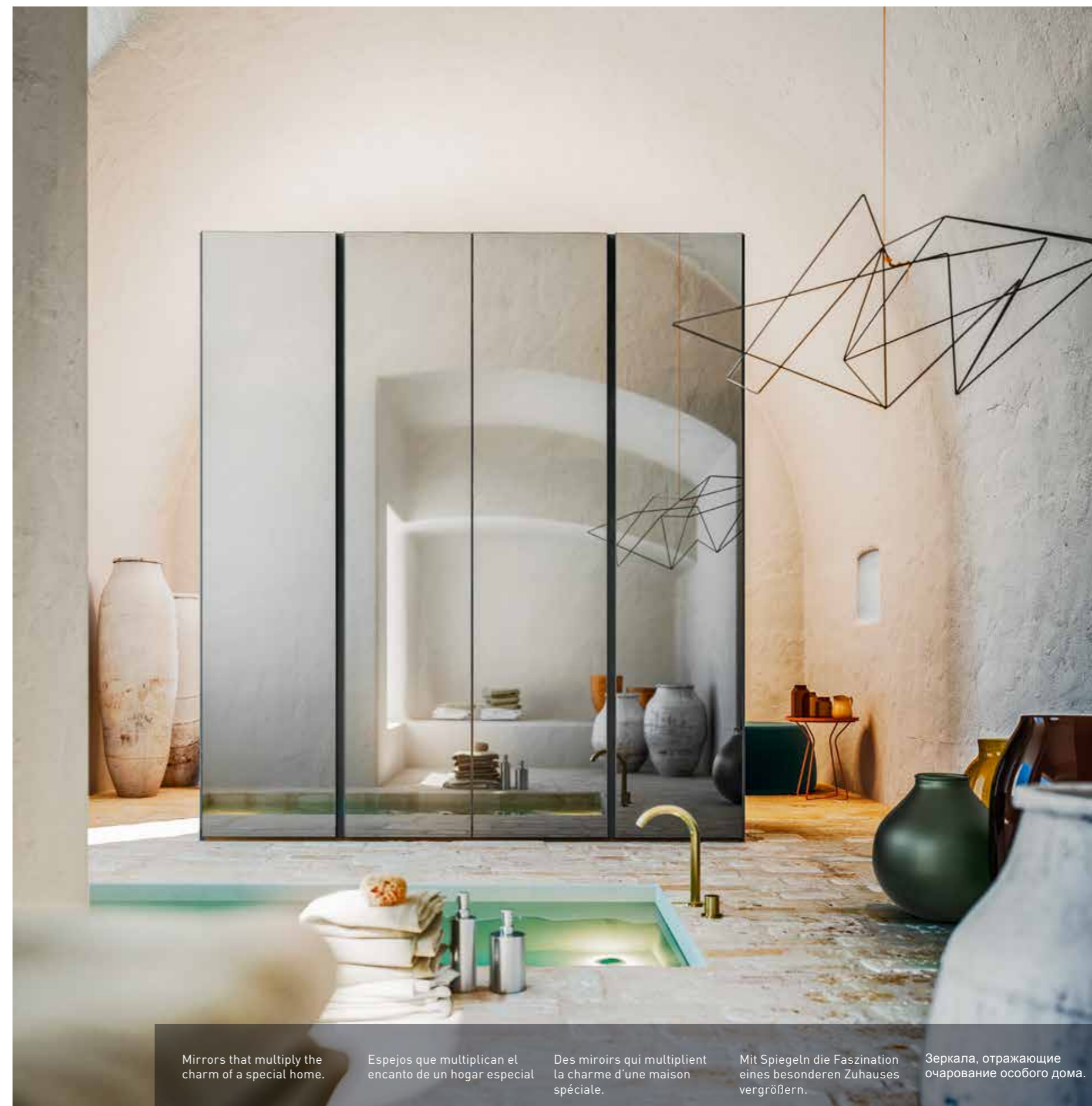
- 3** **STAGIONALE** Composizione Poker laccato platino opaco, maniglie verniciato bianco. Interno nobilitato trama gesso e accessori interni verniciato bianco.
SEASONAL Poker composition lacquered in matt platino, handles painted in bianco. Chalk pattern surfaced interior and internal equipment painted in bianco.



**Specchi
che
moltiplicano
il fascino
di una casa
speciale/**



Poker	L227,8 P87,6 H255,1	MATERA _ground floor
Denny pouf /footstool	Ø85 H37	
Tuft tavolino /occasional table	Ø403 H463	



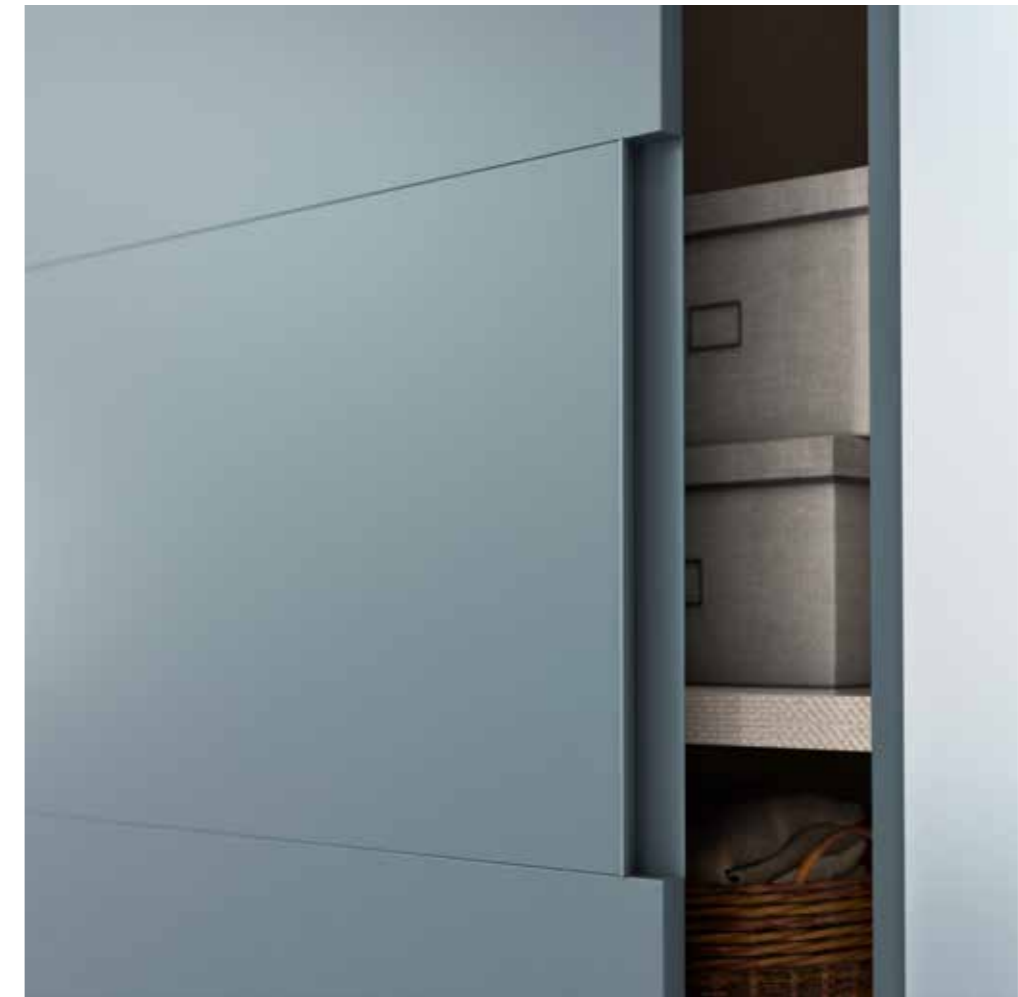
Mirrors that multiply the charm of a special home.

Espejos que multiplican el encanto de un hogar especial

Des miroirs qui multiplient la charme d'une maison spéciale.

Mit Spiegeln die Faszination eines besonderen Zuhauses vergrößern.

Зеркала, отражающие очарование особого дома.



Poker L227,8 P87,6 H255,1 **MATERA**_ground floor
 Tuft tavolino /occasional table Ø40,3 H45,3



Ecowood Olmo biscotto/pino opaco
Biscotto elm Ecowood/matt pino

/Confronta la struttura compositiva

Compare the composition structure
Consulta las diversas estructuras compositivas
Comparez la structure de la composition
Vergleichen Sie den Aufbau der Schrankwand
Сравните композиционную структуру



Ecowood Olmo scuro/platino opaco
Dark elm Ecowood/matt platino

/Confronta la struttura compositiva

Compare the composition structure
Consulta las diversas estructuras compositivas
Comparez la structure de la composition
Vergleichen Sie den Aufbau der Schrankwand
Сравните композиционную структуру



Avorio opaco
Matt Avorio

/Confronta le finiture

Compare finishes
Consulta la gama de acabados
Comparez les finitions
Vergleichen Sie die Ausführungen
Сравните варианты отделки

Poker L453,4 P61,2 H255,1

MATERA_ground floor





Situations balancing past and present.

Contextos que compaginan tradición y modernidad.

Des situations en équilibre entre mémoire et actualité.

Ein Gleichgewicht zwischen gestern und heute.

Равновесие между прошлым и настоящим.



Situazioni in equilibrio fra memoria e attualità/

Poker L453,4 P61,2 H255,1 MATERA_ground floor
Denny pouf /footstool Ø85 H37



il fascino borghese/

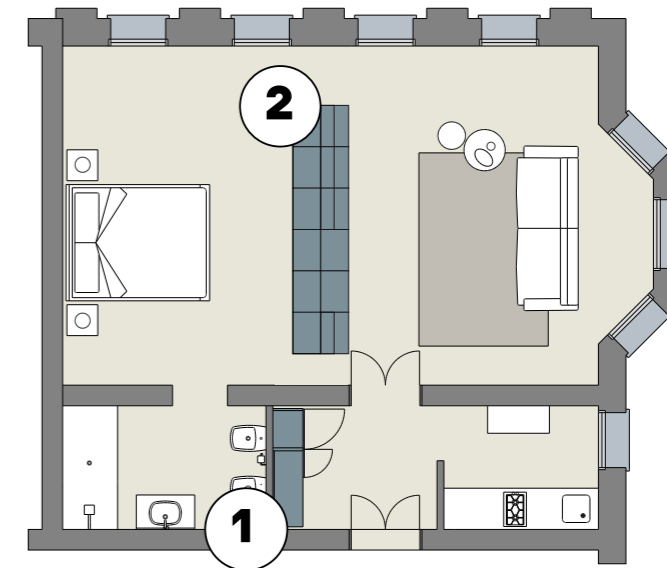
BOURGEOIS CHARM

POKER

milano_fourth level



me



1

INGRESSO Composizione Poker Ecowood Olmo scuro. Schiena e cassetto laccato platino opaco. Accessori verniciato titanio.
ENTRANCE HALL Poker composition in dark elm Ecowood. Back panel and drawer lacquered in matt platino. Accessories painted in titanio.



2

SOGGIORNO/CAMERA Composizione Poker bifacciale nobilitato Olmo scuro, maniglie verniciato titanio. Interno nobilitato trama gesso, ripiani e schienale Ecowood Olmo scuro, pannello porta TV laccato platino opaco.
LIVING ROOM/BEDROOM Two-faced Poker composition in dark elm surfaced, handles painted in titanio. Chalk pattern surfaced interior, shelves and back panel in dark elm Ecowood, TV unit panel lacquered in matt platino.

**L'ingresso
della casa,
come
l'inizio di
un racconto/**



.....
Poker..... L171,4 P43,8 H235,9 **MILANO**_fourth level
Tuft tavolino /occasional table Ø27,5 H50
Wok tavolino /occasional table..... Ø60,3 H36,8



The entrance to the home is like the beginning of a story. La entrada del hogar, como el principio de un cuento. L'entrée de la maison, comme le début d'un récit. Der Eingang eines Hauses ist wieder Anfang einer Geschichte. Прихожая дома, как начало истории.



**Un elemento
per suddividere
lo spazio
e fare salotto/**

An item that splits the space
and creates a sitting room.

Un elemento para dividir el
espacio y crear un salón.

Un élément pour répartir
l'espace et tenir salon.

Ein Raumteiler, der
salonfähig ist.

Элемент для разделения
пространства и создания
гостиной.



Poker L340,6 P105 H229,6 MILANO_fourth level

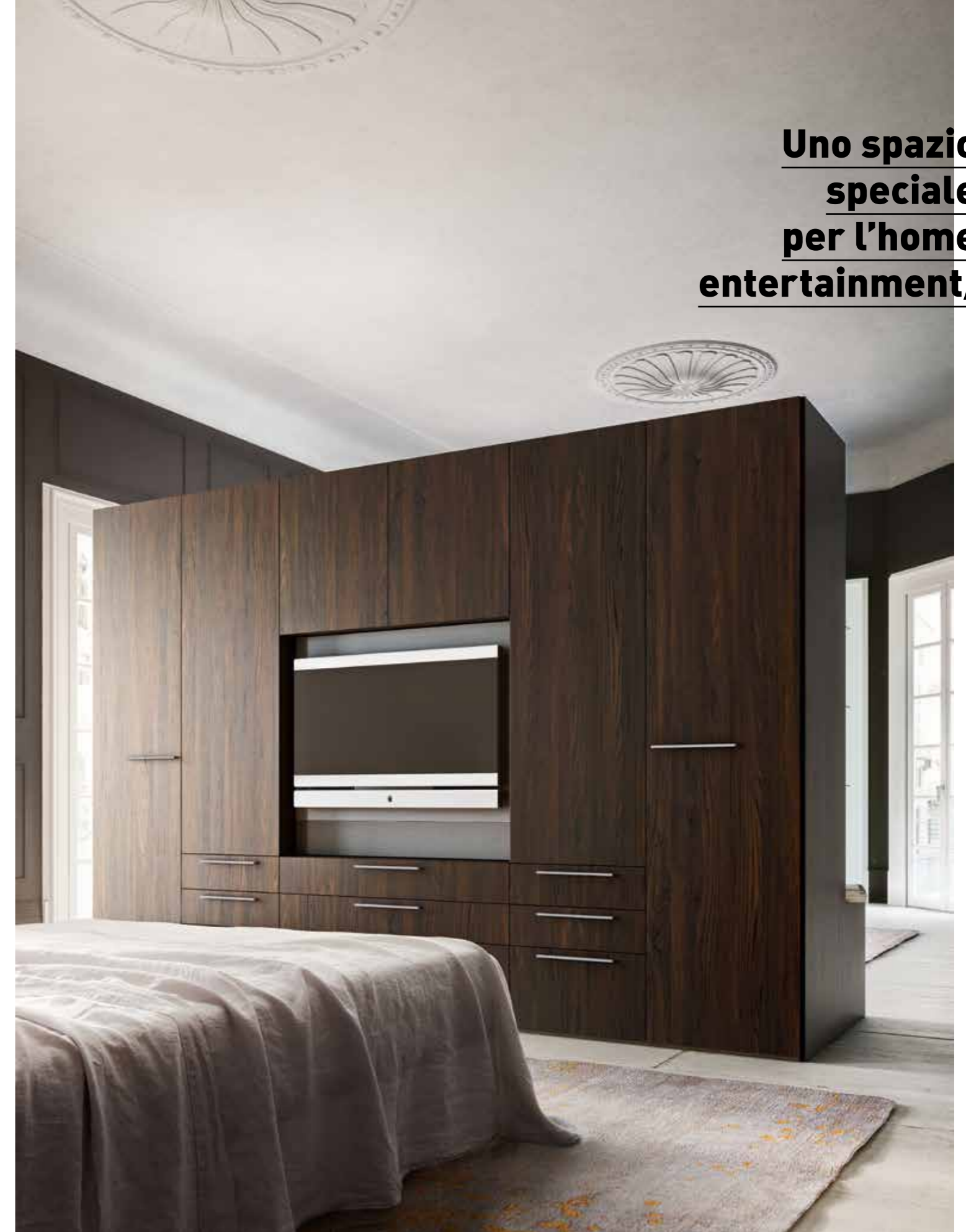
A special place for home entertainment.

Un espacio especial para el entretenimiento doméstico.

Un espace spécial pour l'home entertainment.

Ein Bereich für das Home-Entertainment.

Специальное пространство для домашнего развлечения.



Uno spazio speciale per l'home entertainment/

**ANTE**

Doors p. 098

MANIGLIE

Handles p. 102

MANIGLIE INTEGRATE

Integrated handles p. 103

ELEMENTI ESTERNI

External elements p. 104

ATTREZZATURE INTERNE

Internal equipment p. 106

FINITURE SCOCHE E ATTREZZATURE INTERNE

Body and internal equipment finishes p. 108

ABBINAMENTO SCOCCA/ATTREZZATURE INTERNE

Body / internal equipment combinations p. 109

ACCESSORI INTERNI

Internal accessories p. 110

ACCESSORI MAGNETICI ANTE SCHIENE ESTERNE FIANCHI DIVISORI

Magnetic accessories / doors, external back panels, side panels, partitions p. 112

ACCESSORI SCHIENE ESTERNE

External back panel accessories p. 113

ACCESSORI ESTRAIBILI

Extractable accessories p. 114

COMPLEMENTI AGGREGABILI

Modular complements p. 115

VETRI SERIGRAFATI

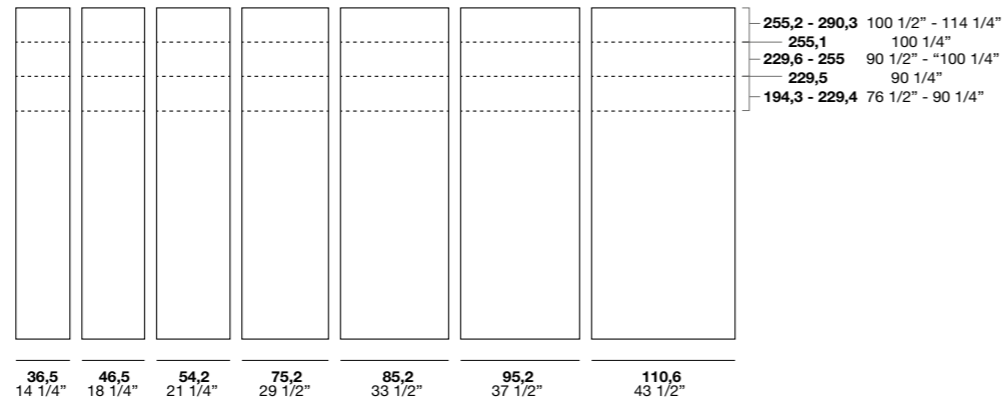
Silk-screen printed glass p. 116

Ante

/Doors
/Puertas
/Portes
/Türen
/Створки

Even

Apertura battente /Swinging opening



Finiture frontale /Front finishes:

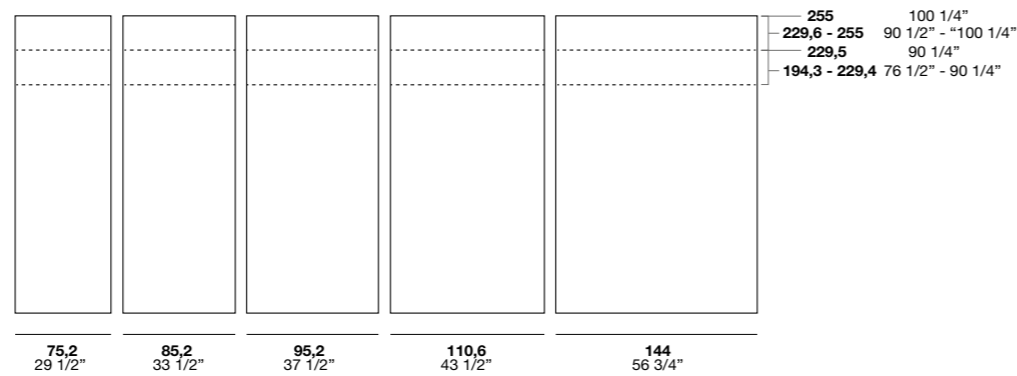
Tinte Unite / Plain colours
Eco Wood / Eco Wood
Rovere Tortora / Tortora oak
Pembroke Tortora / Tortora Pembroke
Rasato / Skimmed
Laccati Opachi Base / Basic Matt Lacquer colours
Laccati Opachi / Matt Lacquer colours
Rovere Laccati Opachi / Oak Matt Lacquer colours
Pembroke Laccati Opachi / Pembroke Matt Lacquer colours

Maniglie disponibili /Handles available:

Ponte
Barra
Katy
Ellie
Hobby
Z
Push Pull

Even

Apertura scorrevole /Sliding opening



Finiture frontale /Front finishes:

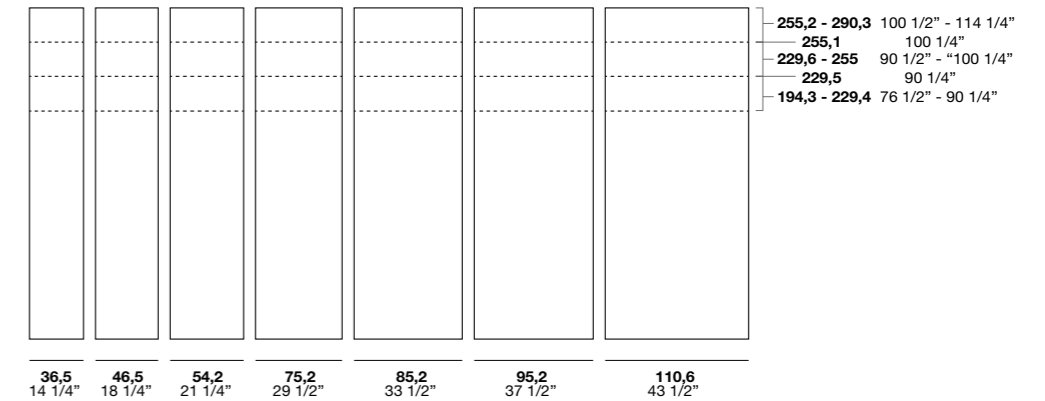
Tinte Unite / Plain colours
Eco Wood / Eco Wood
Rovere Tortora / Tortora oak
Pembroke Tortora / Tortora Pembroke
Rasato / Skimmed
Laccati Opachi Base / Basic matt lacquer colours
Laccati Opachi / Matt Lacquer colours
Rovere Laccati Opachi / Oak Matt Lacquer colours
Pembroke Laccati Opachi / Pembroke Matt Lacquer colours

Maniglie disponibili /Handles available:

Ponte
Barra
Katy
Ellie
Hobby
Z

Go

Apertura battente /Swinging opening



Finiture frontale /Front finishes:

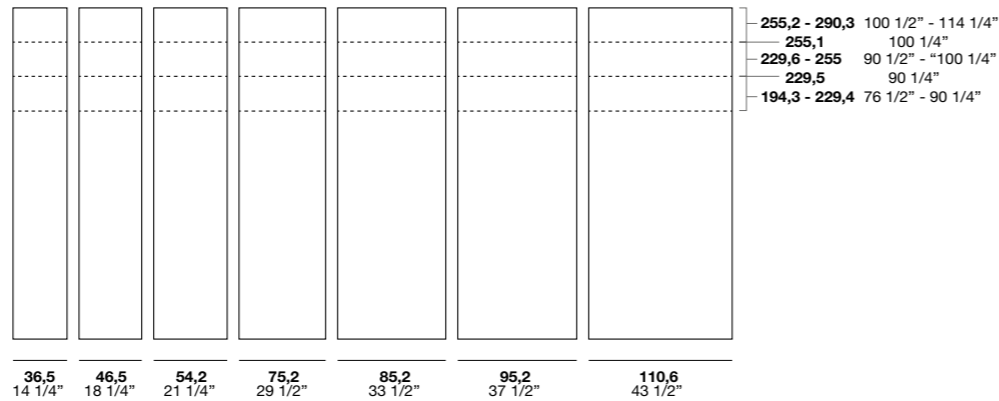
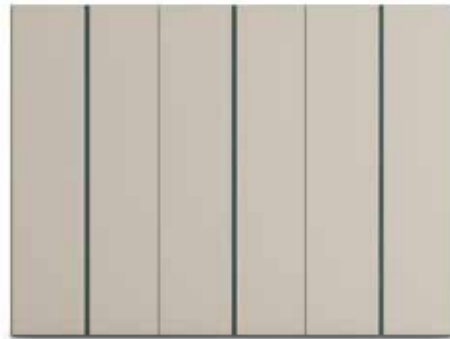
Tinte Unite / Plain colours
Eco Wood / Eco Wood
Rovere Tortora / Tortora oak
Pembroke Tortora / Tortora Pembroke
Rasato / Skimmed
Laccati Opachi Base / Basic matt lacquer colours
Laccati Opachi / Matt Lacquer colours
Rovere Laccati Opachi / Oak Matt Lacquer colours
Pembroke Laccati Opachi / Pembroke Matt Lacquer colours

Ante

/Doors
/Puertas
/Portes
/Türen
/Створки

Go Up

Apertura battente /Swinging opening

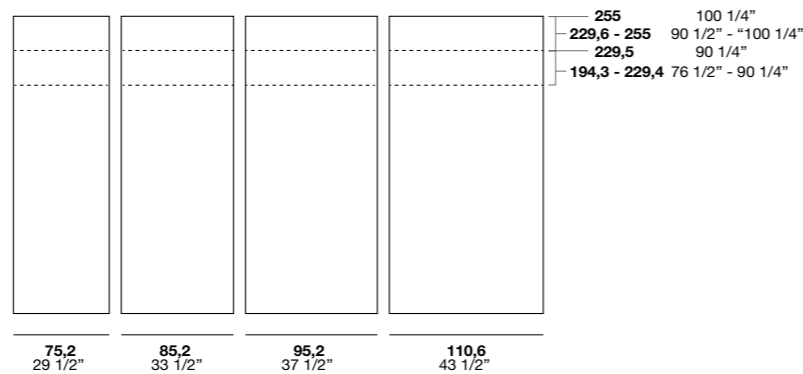


Finiture frontale /Front finishes:

Tinte Unite / Plain colours
Eco Wood / Eco Wood
Rovere Tortora / Tortora oak
Pembroke Tortora / Tortora Pembroke
Rasato / Skimmed
Laccati Opachi Base / Basic Matt Lacquer colours
Laccati Opachi / Matt Lacquer colours
Rovere Laccati Opachi / Oak Matt Lacquer colours
Pembroke Laccati Opachi / Pembroke Matt Lacquer colours
Vetri Lucidi / High gloss glass
Vetri Acidati / Etched glass
Vetri Acidati Serigrafati / Etched silk-screen printed glass
Specchio Grigio / Grigio mirror

Go Up

Apertura scorrevole /Sliding opening

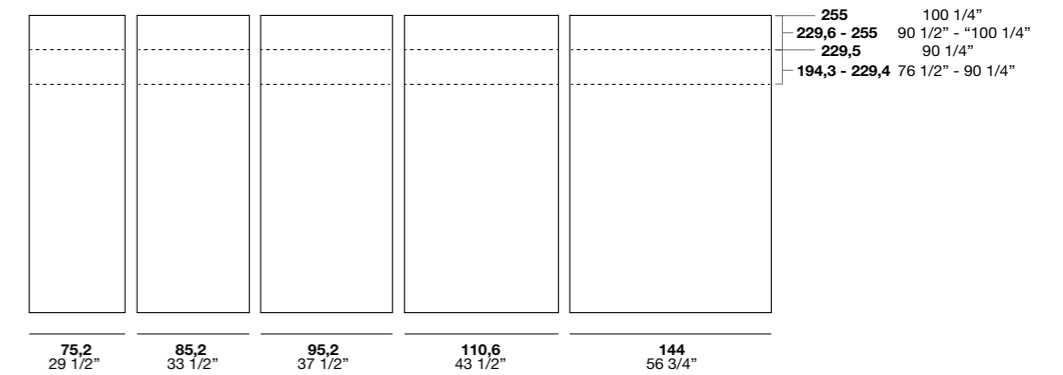


Finiture frontale /Front finishes:

Tinte Unite / Plain colours
Eco Wood / Eco Wood
Rovere Tortora / Tortora oak
Pembroke Tortora / Tortora Pembroke
Rasato / Skimmed
Laccati Opachi Base / Basic Matt Lacquer colours
Laccati Opachi / Matt Lacquer colours
Rovere Laccati Opachi / Oak Matt Lacquer colours
Pembroke Laccati Opachi / Pembroke Matt Lacquer colours
Vetri Lucidi / High gloss glass
Vetri Acidati / Etched glass
Vetri Acidati Serigrafati / Etched silk-screen printed glass
Specchio Grigio / Grigio mirror

Clara

Apertura battente /Swinging opening



Finiture frontale /Front finishes:

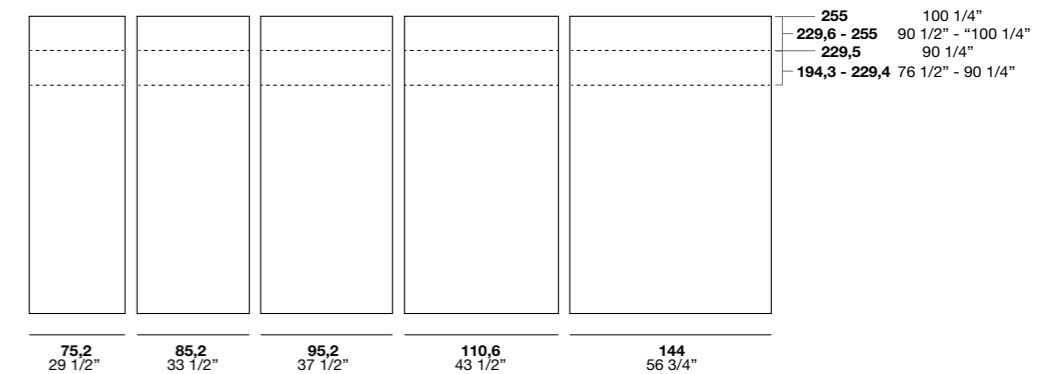
Tinte Unite / Plain colours
Eco Wood / Eco Wood
Rovere Tortora / Tortora oak
Pembroke Tortora / Tortora Pembroke
Rasato / Skimmed
Laccati Opachi Base / Basic Matt Lacquer colours
Laccati Opachi / Matt Lacquer colours
Rovere Laccati Opachi / Oak Matt Lacquer colours
Pembroke Laccati Opachi / Pembroke Matt Lacquer colours

Finiture fascia centrale /Central strip finishes:

Tinte Unite / Plain colours
Eco Wood / Eco Wood
Rovere Tortora / Tortora oak
Pembroke Tortora / Tortora Pembroke
Rasato / Skimmed
Laccati Opachi Base / Basic Matt Lacquer colours
Laccati Opachi / Matt Lacquer colours
Rovere Laccati Opachi / Oak Matt Lacquer colours
Pembroke Laccati Opachi / Pembroke Matt Lacquer colours
Vetri Lucidi / High gloss glass
Vetri Acidati / Etched glass
Vetri Acidati Serigrafati / Etched silk-screen printed glass
Specchio Grigio / Grigio mirror

Contour

Apertura scorrevole /Sliding opening



Finiture frontale /Front finishes:

Tinte Unite / Plain colours
Eco Wood / Eco Wood
Rovere Tortora / Tortora oak
Pembroke Tortora / Tortora Pembroke
Rasato / Skimmed
Laccati Opachi Base / Basic Matt Lacquer colours
Laccati Opachi / Matt Lacquer colours
Rovere Laccati Opachi / Oak Matt Lacquer colours
Pembroke Laccati Opachi / Pembroke Matt Lacquer colours
Vetri Lucidi / High gloss glass
Vetri Acidati / Etched glass
Vetri Acidati Serigrafati / Etched silk-screen printed glass
Specchio Grigio / Grigio mirror

Finiture fascia centrale /Central strip finishes:

Tinte Unite / Plain colours
Eco Wood / Eco Wood
Rovere Tortora / Tortora oak
Pembroke Tortora / Tortora Pembroke
Rasato / Skimmed
Laccati Opachi Base / Basic Matt Lacquer colours
Laccati Opachi / Matt Lacquer colours
Rovere Laccati Opachi / Oak Matt Lacquer colours
Pembroke Laccati Opachi / Pembroke Matt Lacquer colours
Vetri Lucidi / High gloss glass
Vetri Acidati / Etched glass
Vetri Acidati Serigrafati / Etched silk-screen printed glass
Specchio Grigio / Grigio mirror

Maniglie

/Handles
/Tiradores
/Poignées
/Griffe
/Ручки

Barra



Posizionamento orizzontale per anta battente. Finiture: acciaio spazzolato, bronzo opaco, verniciato titanio, verniciato bianco, colori opachi. Positioned horizontally for swinging door. Finishes: brushed steel, matt bronze, painted in titanio, painted in bianco, matt colours.



Posizionamento verticale per anta battente e scorrevole. Finiture: acciaio spazzolato, verniciato titanio, verniciato bianco, colori opachi. Positioned vertically for swinging and sliding door. Finishes: brushed steel, painted in titanio, painted in bianco, matt colours.

Ellie

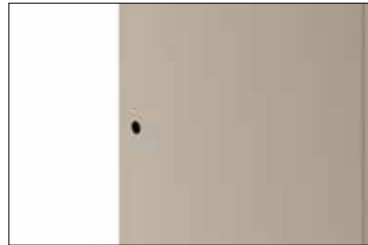


Posizionamento orizzontale per anta battente. Finiture: verniciato titanio, colori opachi. Positioned horizontally for swinging door. Finishes: painted in titanio, matt colours.



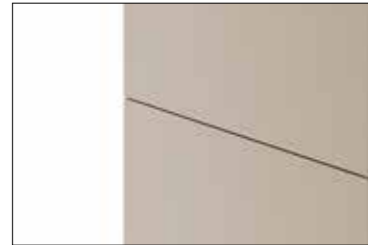
Posizionamento verticale per anta battente e scorrevole. Finiture: verniciato titanio, colori opachi. Positioned vertically for swinging and sliding door. Finishes: painted in titanio, matt colours.

Hobby



Posizionamento laterale per anta battente e scorrevole. Finiture: verniciato titanio, colori opachi. Positioned on the side for swinging and sliding door. Finishes: painted in titanio, matt colours.

Push



Posizionamento laterale per anta battente. Positioned on the side for swinging door.

Z



Posizionamento orizzontale per anta battente. Finiture: verniciato titanio, verniciato bianco, colori opachi. Positioned horizontally for swinging door. Finishes: painted in titanio, painted in bianco, matt colours.



Posizionamento verticale per anta battente e scorrevole. Finiture: acciaio spazzolato, verniciato titanio, verniciato bianco, colori opachi. Positioned vertically for swinging and sliding door. Finishes: brushed steel, painted in titanio, painted in bianco, matt colours.

Ponte



Posizionamento orizzontale per anta battente. Finiture: acciaio spazzolato, verniciato titanio, verniciato bianco, colori opachi. Positioned horizontally for swinging door. Finishes: brushed steel, painted in titanio, painted in bianco, matt colours.



Posizionamento verticale per anta battente e scorrevole. Finiture: acciaio spazzolato, verniciato titanio, verniciato bianco, colori opachi. Positioned vertically for swinging and sliding door. Finishes: brushed steel, painted in titanio, painted in bianco, matt colours.

Katy



Posizionamento orizzontale per anta battente. Finiture: verniciato titanio, colori opachi. Positioned horizontally for swinging door. Finishes: painted in titanio, matt colours.



Posizionamento verticale per anta battente. Finiture: verniciato titanio, colori opachi. Positioned vertically for swinging door. Finishes: painted in titanio, matt colours.

Katy T



Posizionamento orizzontale per anta battente e scorrevole esterna. Finiture: verniciato titanio, colori opachi. Positioned horizontally for swinging door and for external sliding door. Finishes: painted in titanio, matt colours.



Posizionamento orizzontale per anta scorrevole interna. Finiture: verniciato titanio, colori opachi. Positioned horizontally for internal sliding door. Finishes: painted in titanio, matt colours.



Posizionamento verticale per anta battente. Finiture: verniciato titanio, colori opachi. Positioned vertically for swinging door. Finishes: painted in titanio, matt colours.

Horizon



Posizionamento orizzontale per armadio stagionale battente. Finiture: verniciato titanio, colori opachi. Positioned horizontally for seasonal wardrobe with swinging door. Finishes: painted in titanio, matt colours.

Maniglie integrate

/Integrated handles /Tiradores integrados /Poignées intégrées /Integrierte Griffe /Встроенные ручки

Anta Clara



Posizionamento verticale per anta scorrevole. Finiture: verniciato titanio, colori opachi. Positioned vertically for sliding door. Finishes: painted in titanio, matt colours.

Anta Contour



Posizionamento verticale per anta scorrevole. Finiture: acciaio spazzolato, verniciato titanio, verniciato bianco, colori opachi. Positioned vertically for sliding door. Finishes: brushed steel, painted in titanio, painted in bianco, matt colours.

Anta Go



Posizionamento verticale per anta battente e scorrevole. Finiture: verniciato titanio, colori opachi. Positioned vertically for swinging and sliding door. Finishes: painted in titanio, matt colours.

Anta Go Up

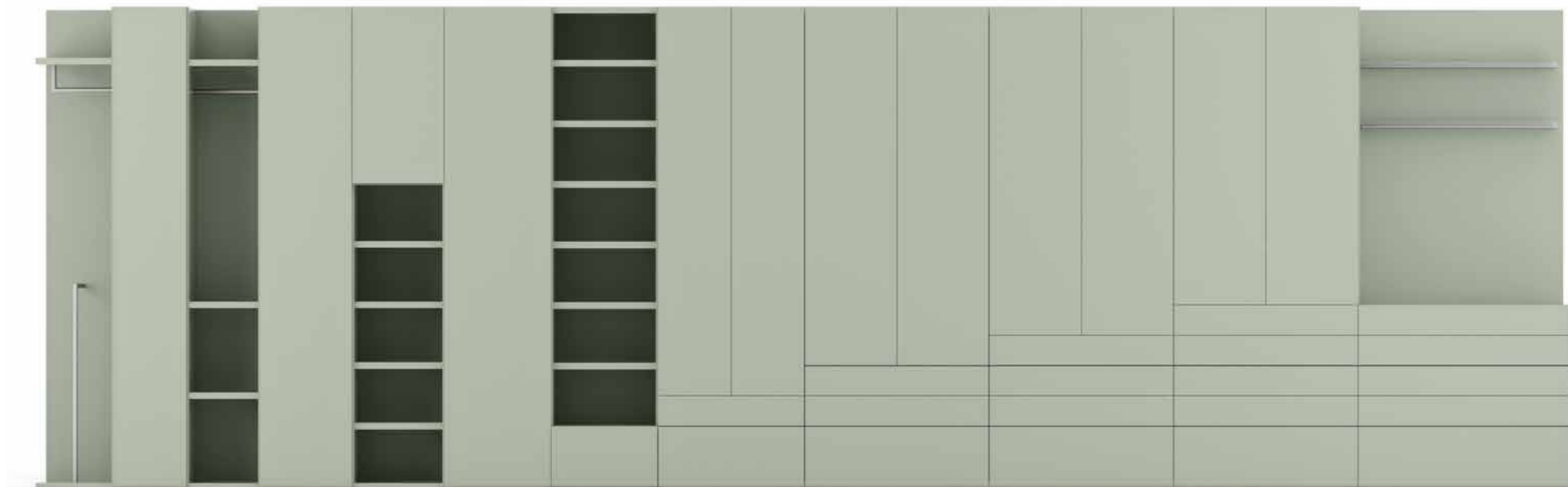


Posizionamento verticale per anta battente e scorrevole. Finiture: verniciato titanio, colori opachi. Positioned vertically for swinging and sliding door. Finishes: painted in titanio, matt colours.

Elementi esterni

/External elements
/Elementos externos
/Éléments extérieurs
/Außenelemente
/Внешние элементы

/technical data



Modulo vano a giorno
Open compartment unit

Vano a giorno, ripiani
Open compartment, shelves

Vano a giorno, anta
Open compartment, door

Vano a giorno, cesto
Open compartment, large drawer

Ante e cassettera
Doors and drawer unit

Mensole metallo e cassettera
Metal shelves and drawer unit



• 40 •• 36,5 •• 36,5 •• 46,5 •• 46,5 •• 54,2 •• 54,2 •• 75,2 •• 95,2 •• 95,2 •• 95,2 •• 110,6 •

Attrezzature interne

/Internal equipment
/Equipamientos internos
/Équipements intérieurs
/Innenausstattung
/Внутреннее оснащение

/technical data



Ripiani
Shelves

Ripiani e porta
giacche rotante
Shelves and swivel
jacket rack

Tubo appendiabiti,
ripiani e
cassettiera
Clothes-hanger
tube, shelves and
drawer unit

Ripiano e porta
scarpe
Shelf and shoe
rack

Ripiani e porta
oggetti
Shelves
and storage
compartment

Ripiani, tubo
appendiabiti e
vassoi estraibili
Shelves,
clothes-hanger
tube and
extractable
trays

Ripiano, tubo
appendiabiti,
cassettiera e
divisorio
Shelf, clothes-
hanger tube,
drawer unit and
partition

Tubo appendiabiti, cassettiera e
ripiano
Clothes-hanger tube, drawer unit
and shelf

Tubo appendiabiti, porta camicie e
cassettiera
Clothes-hanger tube, shirt rack
and drawer unit

Ripiani
Shelves

Ripiani e
accessori
magnetici
Shelves and
magnetic
accessories



Finiture scocche e attrezzature interne

/Body and internal equipment finishes
 /Acabados de estructuras y equipamientos internos
 /Finitions des structures et équipements intérieurs
 /Ausführungen Korpusse und Innenausstattung
 /Варианты отделки каркасов и внутреннее оснащение



Nobilitato Trama Gesso
 Chalk Pattern Surfaced

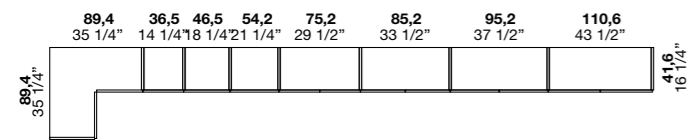


Nobilitato Trama Coloniale
 Colonial Pattern Surfaced

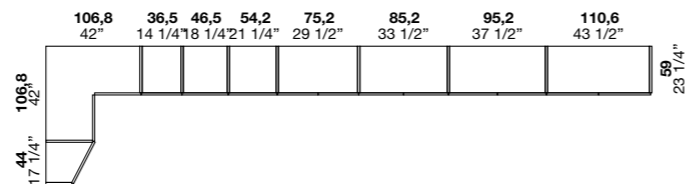
Modularità

/Modularity
 /Modularidad
 /Modularité
 /Module
 /Модульность

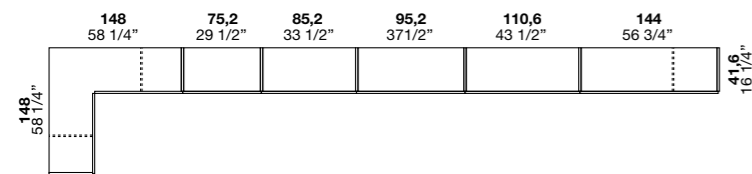
Apertura battente / Apertura battente P 41,6 cm
 Swinging opening



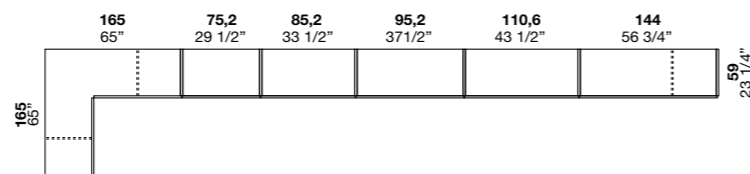
Apertura battente / Apertura battente P 59 cm
 Swinging opening



Apertura scorrevole / Apertura scorrevole P 41,6 cm
 Sliding opening



Apertura scorrevole / Apertura scorrevole P 59 cm
 Sliding opening



Abbinamento scocca / attrezzature interne

/Body / internal equipment combinations
 /Combinación estructura / equipamientos internos
 /Association structure / équipements intérieurs
 /Kombinationen Korpusse / Innenausstattung
 /Сочетание каркаса / внутреннего оснащения



Le attrezzature interne sono finitura verniciato bianco in abbinamento a scocca nobilitato Trama Gesso. The internal equipment comes in bianco painted finish to match the Chalk Pattern surfaced body.



Le attrezzature interne sono finitura verniciato titanio in abbinamento a scocca nobilitato Trama Coloniale. The internal equipment comes in titanio painted finish to match the Colonial Pattern surfaced body.

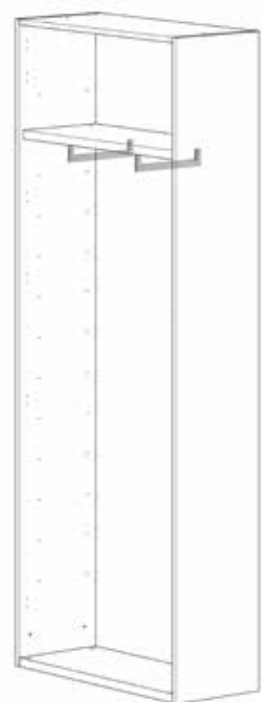
Accessori interni



/Internal accessories
/Accesorios internos
/Accessoires intérieurs
/Innenzubehör
/Внутренние аксессуары



Bastone sviluppo in larghezza
Rail - develops width-wise



Bastone sviluppo in profondità
Rail - develops depth-wise



Svuota tasche per tubo
appendiabiti
Trinket tray for clothes-hanger



Raster
Cubby holes



Vassoi estraibili
Extractable trays



Porta oggetti per vassoi
estraibili e portapantaloni
Storage compartments for
extractable trays and trouser
rack



Cassettiera
Drawer unit



Porta scarpe
Shoe rack



Bastone servetto
Rack pull-down stick



Servetto oleodinamico
Hydraulic pull-down rack



Porta giacche rotante *
Swivel jacket rack *



* deposito del modello comunitario
avvenuto in data 29-09-2014 con
numero di deposito n. 0022547620.

EC patent filed on 29-09-2014 with
file application no. 0022547620.



Scatole rivestite in tessuto
Upholstered boxes



Grucce
Hanger

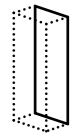


Anello porta sciarpe
Scarf ring



Luce interna
Internal light

Accessori magnetici / ante, fianchi, divisioni

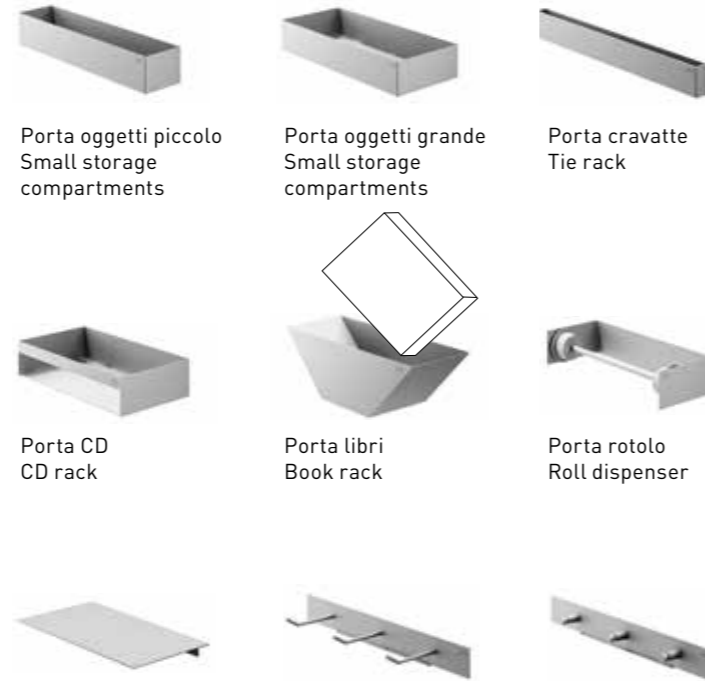


/Magnetic accessories / doors, side panels, partitions
 /Accesorios magnéticos /puertas, costados, divisiones
 /Accessoires magnétiques /portes, côtés, séparations
 /Magnet-Zubehör / -Türen, Außenseiten, Mittelseiten
 /Магнитные аксессуары /створки, боковины, перегородки



Barra magnetica
Magnetic bar

Supporto a scomparsa
Concealed support



Porta oggetti piccolo
Small storage compartments

Porta oggetti grande
Small storage compartments

Porta cravatte
Tie rack

Porta CD
CD rack

Porta libri
Book rack

Porta rotolo
Roll dispenser

Mensolina
Small shelf

Ganci appendiscope
Broom rack

Appendino
Clothes hook



Esempi di combinazioni di accessori ante
Examples of combinations of door accessories

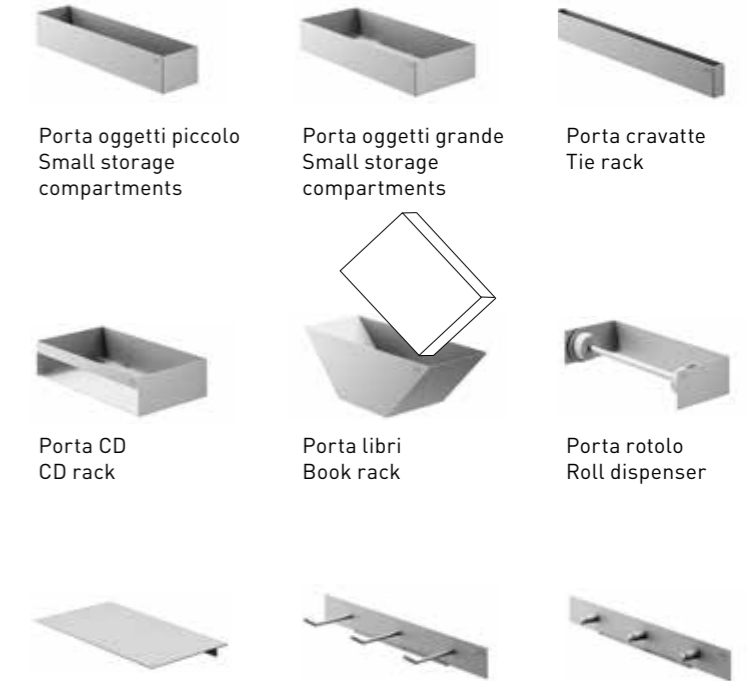
Accessori schiene esterne



/External back panel accessories
 /Accesorios para traseras externas
 /Accessoires fonds extérieurs
 /Zubehör Außenrückwände
 /Аксессуары внешних задних стенок



Supporto a scomparsa
Concealed support



Porta oggetti piccolo
Small storage compartments

Porta oggetti grande
Small storage compartments

Porta cravatte
Tie rack

Porta CD
CD rack

Porta libri
Book rack

Porta rotolo
Roll dispenser

Mensolina
Small shelf

Ganci appendiscope
Broom rack

Appendino
Clothes hook



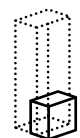
Passacavo
Wireway

Appendino
Clothes hook

Mensola legno
Wooden shelf

Mensola metallo
Metal shelf

Accessori estraibili



/Extractable accessories
/Accesorios extraíbles
/Accessoires extractibles
/Ausziehbares Zubehör
/Выдвижные аксессуары



Piano tavolo
Table top

Asse da stiro
Ironing board

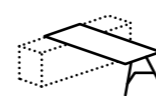
Porta Tv
TV Unit



Letto comprensivo di rete
Bed, including bedstead



Complementi aggregabili



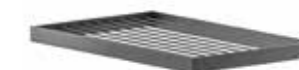
/Modular complements
/Complementos agregables
/Compléments associables
/Anbaubare Ergänzungselemente
/Сочетаемые аксессуары



Base lavello (lavello incluso)
Sink base unit (sink included)



Cestone biancheria
Laundry basket



Stendi biancheria
Laundry airer



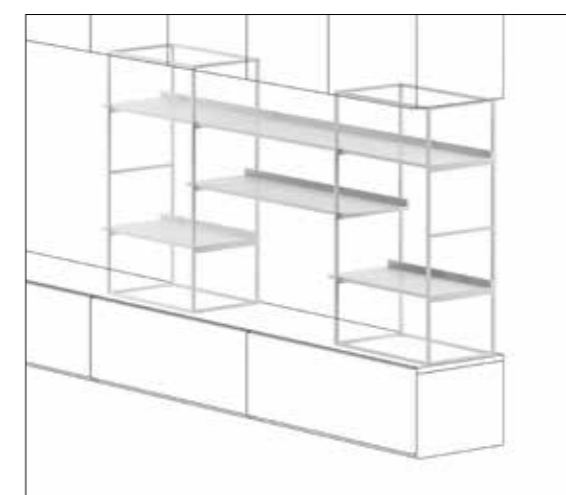
Scrivania (necessita sempre di schienale)
Desk (back panel always necessary)



Cassettiera scrivania
Desk drawer unit



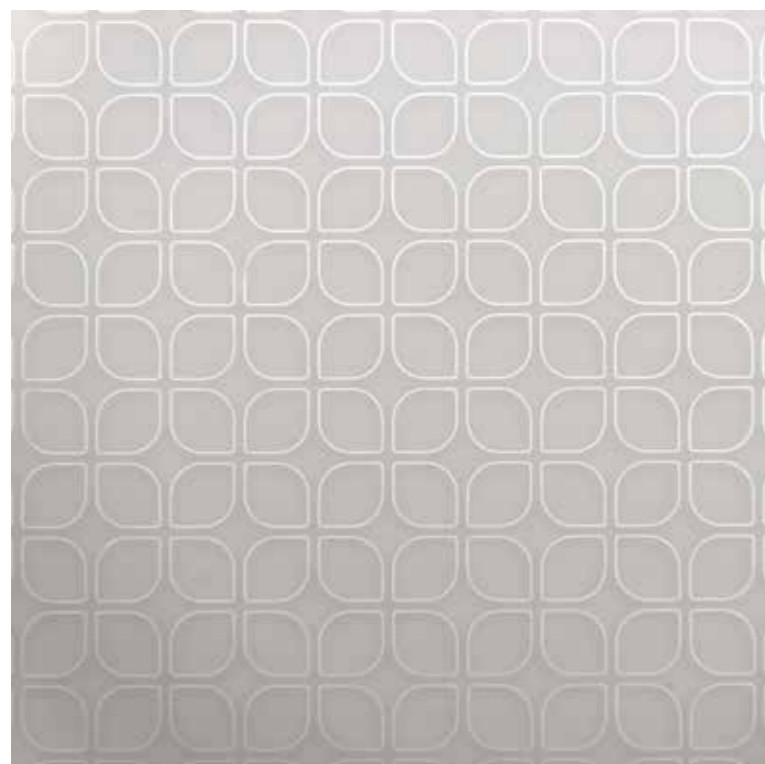
Scrivania penisola "Titan"
"Titan" peninsular desk



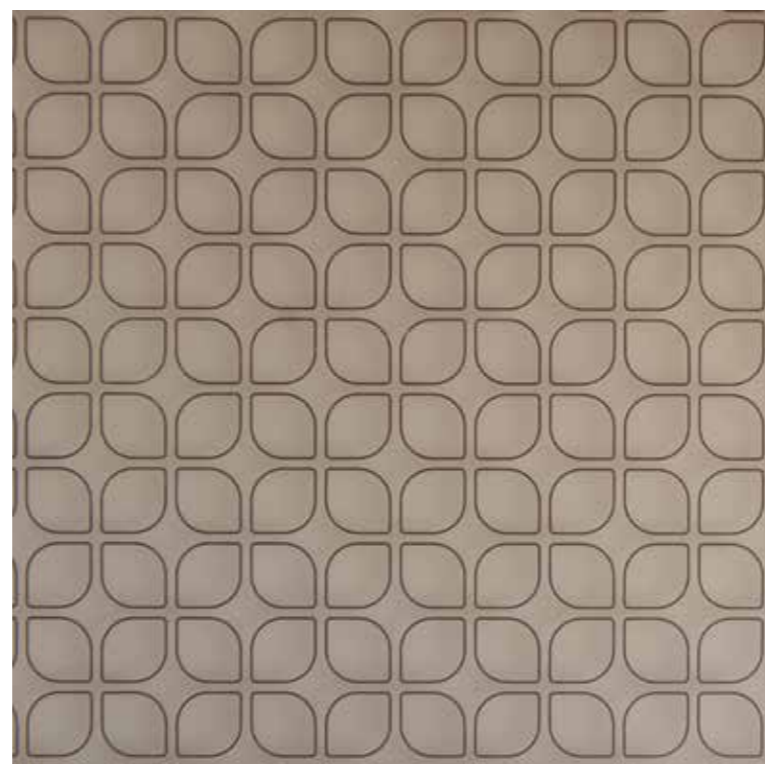
Libreria "Over" (con o senza schiena)
"Over" bookcase (with or without back panel)

Vetri serigrafati

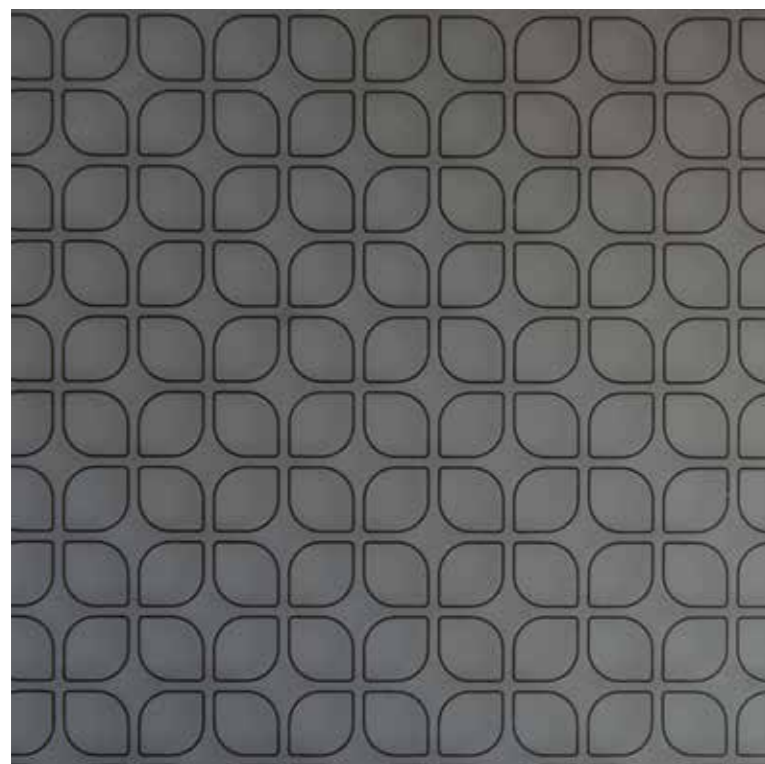
/Silk-screen printed glass
/Cristales serigrafiados
/Verres sérigraphiés
/Scheiben mit Siebdruck
/Стекла с шелкографией



Bianco



Juta



Piombo

art direction
Brunella Vaccher
Genny Canton

concept/set coordinator/graphic
Genny Canton Studio

digital image
Nudesign

photo
Beppe Brancato
Sfepano Scatà

styling
Martina Senzarello
Rosanna Bignucolo

separations
Luce srl

digital print
Fotolito Maistri

stampato 04/2015

thanks to:

Kasthall
3dots Collective
Atelier Areti
Bifranco Ceramica
c&c Milano
Compagnia del tabacco
Draga Obradovic
Incipit Lab
Lanar
Marco Guazzini
Micro Macro
Neò design art
Next Made
Scandola Marmi
Somma
Sumampa
Tato

ALF (+) DA FRE[®]

ALF UNO Spa
Via S. Pio X 17
31018 Francenigo di Gaiarine
Treviso, Italy
Tel. +39 0438 997111
Fax Italia +39 0438 997245
Fax estero +39 0438 997246
www.alfdafre.it alf@alf.it

Verifica le finiture disponibili sul nostro sito internet. / Check the finishes available on our website. / Consulte los acabados disponibles en nuestro sitio web. / Vérifiez les finitions disponibles sur notre site internet. / Überprüfen Sie auf unserer Webseite, ob die gewünschte Ausführung erhältlich ist. / Познакомьтесь с вариантами отделки на нашем интернет-сайте www.alfdafre.it

ALF UNO s.p.a. si riserva di apportare in qualsiasi momento modifiche a prodotti, misure e materiali, che ritenesse utili per esigenze di carattere produttivo e commerciale. Per essere sempre aggiornati vi invitiamo a consultare il nostro sito internet www.alfdafre.it.

LE FINITURE

I materiali utilizzati dalla nostra azienda sono selezionati tra i più affidabili per applicazione e resa estetica. Nonostante questo devono considerarsi tollerabili alcune differenze dovute alle caratteristiche stesse di materiali come essenze naturali, vetri, laccature e all'artigianalità di alcune fasi del processo produttivo che da sempre è un nostro valore aggiunto. Inoltre alcune finiture possono subire nel tempo maturazioni dovute all'azione della luce e del tempo. È importante quindi specificare se nell'ordine vi sono sostituzioni o completamenti per valutare insieme il miglior modo di procedere. Le tonalità di colore e le finiture illustrate vanno considerate puramente indicative. Verificare sempre la fattibilità dell'abbinamento finiture consultando l'interno del listino.

ALF UNO s.p.a. reserves the right to make any changes to products, measurements and materials at any time deemed useful for manufacturing and sales purposes. To stay up to date at all times, please visit our website www.alfdafre.it

FINISHES

The materials we use are selected among the most reliable products in terms of application and aesthetic rendering. Despite this, certain differences due to the very characteristics of materials such as natural wood finishes, glass and lacquers must be considered tolerable, as well as the hand-crafted nature of certain phases of the production process, which has always been one of our added values. In addition, some finishes may change over time, due to the effects of light and time. It is therefore important to specify whether there are replacements or completions in the order to assess the best way to proceed together. The finishes featured in this sample collection are purely indicative and are not available for all products. Please check in the price list if the finish is available for the chosen item. Orders will not be accepted for products with finishes not included in the price list. The colour shades and finishes illustrated herein are to be considered purely indicative. Always check the feasibility of finish combinations by consulting the price list contents.

